

# PRODUCTS



“If you can’t measure it accurately, you can’t manage it efficiently...”



TraceableLIVE® cloud-based system monitors your **CRITICAL ENVIRONMENTS** and lets you know if anything goes wrong by sending you a Text, E-mail, or Push Alert.

When you can't be there, TraceableLIVE® **ALERTS YOU** via your smartphone, tablet, or computer at any time, anywhere...

### Once the setup is complete you can:

- Set alarm parameters on device remotely
- View current conditions anywhere
- Generate data reports in real time
- Assign user access for the whole team



TraceableLIVE® Subscription Cost through [traceablelive.com](http://traceablelive.com)

# of devices	Monthly	Annually	SMS (Text) - Add on
1-9 devices	\$8.99/device	\$100/device	+\$2 per device/month
10+ devices	\$7.20/device	\$80/device	+\$2 per device/month





# Monitoring Made Easy with Real-time Text, E-mail and Push Alerts

Get Connected • Get Notified • Get 

## TraceableLIVE® provides simple, digital monitoring of

Refrigerator/Freezers • ULT Freezers • Vaccines • Chemical Storerooms • Biofuel Research • Greenhouses • Liquid Nitrogen Storage • Microbiology/Immunology • Controlled Warehouses



## TraceableLIVE® Wi-Fi Connected Digital Datalogger Thermometers, Hygrometers, Barometers and CO<sub>2</sub> meters with Real-Time Alerts

- Monitor locally or remotely temperature and more—connects to existing Wi-Fi
- Alerts: temperature alarm, connectivity interruption, low battery
- Cloud-based applications—no local software required; web, Android, iOS data visibility
- Receive MOBILE PUSH / E-MAIL / TEXT notifications
- To access data and remote notifications require TraceableLIVE® subscription
- Continuous data transmission & monitoring using SSL-encrypted SECURE connection
- Unlimited scalability—use TraceableLIVE® in individual labs or an entire network of facilities
- Multiple point accredited temperature calibration—traceable to NIST, °F/°C switchable
- Supplied: Quick Start Guide, batteries, magnets, Velcro®, wall mount, Traceable® Certificate



99460-00

99460-05

## TraceableLIVE® Wi-Fi Refrigerator/Freezer Datalogging Thermometers

Ideal for monitoring temperatures or critical samples and reagents in refrigerators & freezers

- Meets current CDC requirements and additional recommendations for vaccine storage and monitoring
- Multiple point accredited temperature calibration (–40°C, 0°C, 50°C)—traceable to NIST

Cat. No.	Range	Accuracy	Resolution	Probes
99460-00				2 Bottles (patented)
99460-05	–50.00 to 60.00°C (–58.00 to 140.00°F)	±0.25°C	0.01°	1 Bottle & 1 Bullet™
99460-10				2 Bullets™
99460-15				2 Stainless-steel



18000-27

18000-28

## TraceableLIVE® Wi-Fi Ultra-Low Datalogging Thermometers

Designed for ULT freezers—monitor temperatures below –80°C ensuring critical samples are not compromised

- Ideal for monitoring ultra-low temperature freezers
- Multiple point accredited temperature calibration (–80°C, –40°C, 0°C, 100°C)—traceable to NIST

Cat. No.	Range	Accuracy	Resolution	Probes
18000-27	–90.00 to 105.00°C (–130.00 to 221.00°F)	±0.1°C	0.01°	1 Platinum RTD sensor, Stainless-steel 316 probe
18000-28				2 Platinum RTD sensors, Stainless-steel 316 probes



18001-08

18001-09

## TraceableLIVE® Wi-Fi LN2 Datalogging Thermometers

Best for monitoring temperatures in liquid nitrogen storage dewars—receive notifications for temperatures down to –200°C

- Ideal for monitoring long term sensitive, irreplaceable biologicals
- Multiple point accredited temperature calibration (–196°C, –80°C, 0°C and 100°C)—traceable to NIST

Cat. No.	Range	Accuracy	Resolution	Probes
18001-08	–200.00 to 105.00°C (–328.00 to 221.00°F)	±0.25°C	0.01°	1 Platinum RTD sensor, Stainless-steel 316 probe
18001-09				2 Platinum RTD sensors, Stainless-steel 316 probes

## TraceableLIVE® Wi-Fi Datalogging Hygrometers/Thermometers

Ideal for monitoring humidity and temperatures in controlled storage laboratories, warehouses, storerooms, and environmental chambers

- Ambient probe and external cable probe units available
- Alerts: humidity, temperature, connectivity interruption, and low battery

Cat. No.	Parameters	Range	Accuracy	Resolution	Probes
18000-29	Humidity	0.0 to 100%RH (non-condensing)	±3% (20 to 80% RH), ±5% otherwise	0.1% RH	1 ambient dongle sensor
18000-30	Temperature	0.00 to 55.00°C (32.00 to 131.00°F)	±0.4°C	0.01°	1 cable probe sensor



## TraceableLIVE® Wi-Fi Datalogging Barometer

Designed to monitor plants, blood gases or any environment where barometric pressure conditions are critical

- Place entire unit inside an environment
- Alerts: barometric pressure, temperature, humidity, connectivity interruption, and low battery

Cat. No.	Parameters	Range	Accuracy	Resolution	Probes
18000-33	Barometric Pressure	500 to 1100 millibars (mb)	±4 mbar	1 mbar	1 ambient dongle sensor
	Temperature	0 to 55°C (32 to 131°F)	±0.4°C	0.01°	
	Humidity	0 to 100% RH (non-condensing)	±3% RH (5-75%), otherwise ±5% RH	0.01% RH	



## TraceableLIVE® Wi-Fi Datalogging CO<sub>2</sub> Meter

Best for monitoring CO<sub>2</sub>, temperature and humidity in greenhouses, micro labs, biofuel research and other environments

- Ambient unit with dongle—place entire unit inside a greenhouse or other environments
- Alerts: CO<sub>2</sub>, temperature, humidity, connectivity interruption, and low battery

Cat. No.	Parameters	Range	Accuracy	Resolution	Probes
18000-31	CO <sub>2</sub>	0 – 10,000 ppm	4% reading + 100 ppm	1 ppm	1 ambient Dongle sensor; 1 remote sensor 3' cable
	Temperature	0.00 to 50.00°C (32.00 to 122.00°F)	± 0.4°C	0.01°	
	Humidity	0 to 95% (non-condensing)	±3% RH (5 to 75%) otherwise ±5% RH	0.01% RH	
18000-32	CO <sub>2</sub>	0.00 – 20.00%	4% reading + 1% full scale	0.01%	1 ambient Dongle sensor; 1 remote sensor 3' cable
	Temperature	0.00 to 50.00°C (32.00 to 122.00°F)	± 0.4°C	0.01°	
	Humidity	0 to 95% (non-condensing)	±3% RH (5 to 75%) otherwise ±5% RH	0.01% RH	





Bottle Probe    Bullet™ Probe    Vaccine Probe    Plastic Bottle Probe



Platinum RTD sensors, Stainless-steel 316 Probe



98768-57

## Traceable® Excursion-Trac™ Datalogging Refrigerator/Freezer Thermometers

### Datalogging thermometer with user-defined time intervals

- User-defined time intervals, MIN/MAX and current conditions displayed on LCD, and °F/°C switchable
- Stores up to 10 unique alarm events
- Meets current CDC requirements for vaccine storage and monitoring
- Rolling memory structure, maintains most recent 525,600 temperature observations
- Recorded data (CSV file) may be transferred from thermometer to PC or Mac using a USB flash drive—no additional software needed
- Smart-Alarm™ features a visual/audible alarm that continues to alarm even if the unit returns to non-alarm conditions
- Hassle-free retrieval of data—unit can remain in use while downloading/analyzing data
- 98768-53 and 98768-54 are ideal for monitoring ultra-low temperature freezers and include a PTFE cable
- Status indicators—low battery, memory full, USB data transfer, active alarm state
- Supplied: stand, Velcro®, magnetic strips, wall mount, batteries, Traceable® Certificate

Cat. No.	Range	Resolution	Accuracy	Probe
94460-07	-50.00 to 70.00°C (-58.00 to 158.00°F)	0.01°	±0.25°C	1 bottle (patented)
94460-09				2 bottles (patented)
94460-11				1 Bullet™
94460-14				2 Bullets™
94460-18				1 bottle & 1 Bullet™
94460-16				1 stainless-steel
94460-17				2 stainless-steel
98767-63				1 vaccine bottle (5ml)
98767-64				2 vaccine bottles (5ml)
98767-67				1 Glycol-filled plastic bottle
98767-68	2 Glycol-filled plastic bottles			
98768-53	-90.00 to 80.00°C (-130.00 to 176.00°F)	0.01°	±0.2°C	Platinum RTD sensors, 1 stainless-steel 316 Probe
98768-54		0.01°		Platinum RTD sensors, 2 stainless-steel 316 Probes

## Traceable® LN2 Thermometer

### Datalogging thermometer with user-defined time intervals

- Best for monitoring your cryo needs for sensitive biologicals
- Recorded data (CSV file) may be transferred from thermometer to PC or Mac using a USB flash drive—no additional software needed
- Smart-Alarm™ features a visual/audible alarm that continues to alarm even if the unit returns to non-alarm conditions
- Hassle-free retrieval of data—unit can remain in use while downloading/analyzing data
- Durable platinum RTD sensor, 316 stainless-steel 316 with 10' cable
- Multiple calibration points (-196°C, -80°C, 0°C and 100°C)

Cat. No.	Temperature Range	Resolution	Accuracy	Data Overwrite	Memory	Probe
<b>Excursion-Trac™</b>						
98768-57	-200.00 to 105.00°C (-328.00 to 221.00°F)	0.01°	±0.25°C	Yes	525,600 data points	Platinum RTD sensors, 1 stainless-steel
98768-58						Platinum RTD sensors, 2 stainless-steel
<b>Memory-Loc™</b>						
98768-59	-200.00 to 105.00°C (-328.00 to 221.00°F)	0.01°	±0.25°C	No	1,051,200 data points	Platinum RTD sensors, 1 stainless-steel
98768-0						Platinum RTD sensors, 2 stainless-steel

# Traceable® Memory-Loc™ Datalogging Refrigerator/Freezer Thermometers

## Datalogging thermometer that can be used in 21 CFR 11 environments

- User-defined time intervals, MIN/MAX and current conditions displayed on LCD, and °F/°C switchable
- Meets current CDC requirements and additional recommendations for vaccine storage and monitoring
- Use in 21 CFR 11 environments, raw data is locked and may not be cleared/changed on base unit
- Datalogging thermometer with fixed one minute logging interval
- Capable of storing over 1 million temperature observations
- Stores up to 10 unique alarm events
- Recorded data (CSV file) may be transferred from thermometer to PC or Mac using a USB flash drive—no additional software needed
- Hassle-free retrieval of data—unit can remain in use while downloading/analyzing data
- Smart-Alarm™ features a visual/audible alarm that continues to alarm even if the unit returns to non-alarm conditions
- 98768-55 and 98768-56 are ideal for monitoring ultra-low temperature freezers and include a PTFE cable
- Status indicators—low battery, low memory, USB data transfer, active alarm state
- Supplied: stand, Velcro®, magnetic strips, wall mount, batteries, Traceable® Certificate



94460-47



Bottle Probe    Bullet™ Probe    Vaccine Probe



Platinum RTD sensors, Stainless-steel 316 Probe

Cat. No.	Range	Resolution	Accuracy	Probe
94460-37	-50.00 to 70.00°C (-58.00 to 158.00°F)	0.01°	±0.25°C	1 bottle (patented)
94460-39				2 bottles (patented)
94460-41				1 Bullet™
94460-43				2 Bullets™
94460-47				1 bottle & 1 Bullet™
94460-44				1 stainless-steel
94460-46				2 stainless-steel
98767-65				1 vaccine bottle (5ml)
98767-66				2 vaccine bottles (5ml)
98768-55				-90.00 to 80.00°C (-130.00 to 176.00°F)
98768-56	0.01°	±0.2°C	Platinum RTD sensors, 2 stainless-steel 316 Probes	



### Temperature-buffered glycol bottle probe mimics solution

Bottle and solution insulate sensor from rapid changes, as an example, when a refrigerator door is opened. Solution mimics temperature of stored samples.

### Glycol-filled plastic bottles now available for the food industry

### Sealed probe with non-toxic glycol

Mercury-free, solid-state probe eliminates possibility of refrigerator contamination. Probe is sealed in a miniature bottle (1 x 2½ inches) filled with nontoxic glycol. Solution is GRAS (generally recognized as safe) by the FDA (Food and Drug Administration).



98767-54



Bottle Probe    Bullet™ Probe    Vaccine Probe    Plastic Bottle Probe



37804-10



37804-11



37803-88



37804-03

37804-05

37804-04

## Traceable® Refrigerator/Freezer Ultra™ Thermometers

### Temperature-buffered bottle insulates sensor from rapid temperature changes

- Smart-Alarm™: visual/audible alarm that continues to alarm even if unit returns to non-alarm conditions
- Triple display simultaneously shows MIN/MAX and current temperatures, °F/°C switchable
- Monitors minimum/maximum readings overnight, on weekends, or for any time period - a significant advantage over current read-only temperatures
- Alarm is programmable in 0.1° increments—alerts user when temperature rises above/falls below a set point
- Supplied: battery, Velcro®, magnetic strips, 10 ft cable, Traceable® Certificate

Cat. No.	Range	Resolution	Accuracy	Probe
98767-54	-58.0 to 158.0°F (-50.0 to 70.0°C)	0.1°	±0.5°C between -30 to 50°C, otherwise ±1°C	1 Glycol-filled bottle (patented)
98767-55				2 Glycol-filled bottles (patented)
98767-56				1 Bullet™ (0.187-inch diameter and ¾-inch long)
98767-57				2 Bullets™ (0.187-inch diameter and ¾-inch long)
98767-58				1 bottle & 1 Bullet™
98767-59				1 vaccine bottle (patented)
98767-60				2 vaccine bottles (patented)
98767-61				1 Glycol-filled plastic bottle
98767-62	2 Glycol-filled plastic bottles			

## Traceable® Wireless Radio-Signal Refrigerator Thermometer

### Captures temperature data with high-efficiency wireless technology

- Unit wirelessly reads refrigerator temperatures from 100 feet away, place remote module inside refrigerator
- Minimum/maximum memory allows monitoring conditions over any time period, °F/°C switchable
- Distinctive alarm sounds when temperature rises above or falls below set points
- Readings from up to 3 remote sensors are sent to main unit via radio signal-433 MHz penetrates refrigerators and walls
- Supplied: batteries, 1 main unit, 1 remote unit, flip-open stand, wall mount, Velcro®, Traceable® Certificate

Cat. No.	Range	Resolution	Accuracy	Probe
37804-10	-22.0 to 158.0°F (-30.0 to 70.0°C)	0.1°	±1.0°C	Glycol-filled bottle (patented)
37804-11				Accessory Bottle Remote module (set to channel 1, 2, or 3)

## Traceable® Platinum High-Accuracy Refrigerator/Freezer Thermometer

### Displays MIN/MAX temperatures for previous 24 hours (for each hour) and previous 7-days (for each day); or previous 31 days (for each day)

- Smart-Alarm™ features a visual/audible alarm that continues to alarm even if the unit returns to non-alarm conditions
- Time/date stamp key shows exact time and date for all minimum and maximum readings
- Triple display shows current temperature in °F or °C, as well as MIN/MAX temperatures
- 37804-04 and 37804-05 are ideal for ultra-low freezer applications
- 37803-88 and 37804-03 are ideal for refrigerator/freezer applications
- Supplied: platinum probe, stand, wall mount, batteries, Traceable® Certificate

Cat. No.	Range	Resolution	Accuracy	Probe	Calibration points
<b>Platinum RTD stainless-steel probe</b>					
37804-04	-148.00 to 199.99°F (-100.00 to 199.99°C)	0.01°	±0.1°C	Handle: 0.13" dia. x 6.3" stem, 9" overall	-80°C, 0°C, 50°C and 190°C
<b>Refrigerator/Freezer</b>					
37803-88	-58.00 to 158.00°F (-50.00 to 70.00°C)	0.01°	±0.1°C	Glycol-filled bottle (patented)	-40°C, 0°C and 50°C
37804-03				0.187" dia. x ¾" long	
37804-05	-148.00 to 158.00°F (-100.00 to 70.00°C)	0.01°	±0.1°C	0.187" dia. x ¾" long	-80°C, -40°C, and 0°C



## Traceable® High-Accuracy Refrigerator Thermometers

### High accuracy thermometer monitors 2 different areas of any refrigerator or freezer

- Reads to 0.01° while monitoring MIN/MAX temperatures in refrigerator and freezer simultaneously or two refrigerator locations with the exact time and date readings occurred, °F/°C switchable
- Two channel alarms provide unique visual (LED's) and audio alerts when temperature rises above or falls below user-defined high and low set points
- Smart-Alarm™ features a visual/audible alarm that continues to alarm even if unit returns to non-alarm conditions
- Unit displays the exact time and date when dual thermometer alarms are triggered, alarms are programmable in 0.1° increments
- Supplied: battery, 10 ft cable, magnetic strips, Velcro®, bench stand, Traceable® Certificate



98767-30



94460-92

94460-91

98767-51

98767-52

Cat. No.	Range	Resolution	Accuracy	Probe
98767-30				1 Glycol-filled bottle (patented)
94460-92				2 Glycol-filled bottles (patented)
94460-91	-58.00 to 158.00°F (-50.00 to 70.00°C)	0.01°	±0.3°C	2 (chemical-resistant, water-resistant sensor 0.187-inch diameter and ¾-inch long)
98767-51				1 vaccine bottle (patented)
98767-52				2 vaccine bottles (patented)

## Traceable® Refrigerator/Freezer Thermometers

### The world's most popular refrigerator/freezer thermometer

- Accurately monitor temperatures in freezers, water baths, heating blocks, incubators, and refrigerators with this enclosed temperature-buffered sensor, °F/°C switchable
- Minimum/maximum monitors readings overnight, on weekends, or for any time period
- Alarm is programmable in 1° increments, sounds continuously when temperature rises above/falls below set points and can be turned off manually
- Visual and audible signals continue even if temperature returns to non-alarm range
- Supplied: flip-open stand, 10 ft cable, wall mount, Velcro®, magnetic strips, Traceable® Certificate



94460-72

Cat. No.	Range	Resolution	Accuracy	Probe
94460-70				0.187-inch diameter and ¾-inch long
94460-72	-58 to 158°F (-50 to 70°C)	1°	±1°C	Glycol-filled bottle (patented)
94460-71				5ml vaccine bottle



94460-70



94460-71

## Traceable® Digital-Bottle™ Refrigerator/Freezer Thermometer

### Sealed unit can be placed inside a refrigerator

- MIN/MAX memory monitors readings overnight, on weekends, or for any time period—a significant advantage over glass thermometers displaying only current temperature
- The entire unit, including the bottle and display, may be placed in any environment within the operating range of the thermometer, °F/°C switchable
- Supplied: battery, holder, double-backed tape, Velcro®, Traceable® Certificate



94460-56

Cat. No.	Range	Resolution	Accuracy	Probe
94460-56	-20.0 to 50.0°C			Glycol-filled bottle (patented)
94460-58	(-4.0 to 122.0°F)	0.1°	±0.5°C between 0 to 50°C; otherwise ±1°C	Glass-bead filled bottle



94460-81



94460-82



94460-83

## Traceable® Jumbo Refrigerator/Freezer Thermometer

### Jumbo LCD simultaneously shows MIN/MAX/current temperature

- All-time favorite modular thermometer is easy to mount or position on any flat surface
- Valuable MIN/MAX memory records reading over any time period, °F/°C switchable
- Easy-read digital display with jumbo digits updates every 10 seconds to maintain exact test results
- Supplied: battery, magnet, stand, probe, 10-foot cable, Traceable® Certificate

Cat. No.	Range	Resolution	Accuracy	Probe
94460-81	-58 to 158°F (-50 to 70°C)	0.1°	±1°C	0.187-inch diameter and ¾-inch long
94460-82	-58 to 158°F (-50 to 70°C)	0.1°	±1°C	Bottle specifically for refrigerator/freezer applications (patented)
94460-83	-58 to 158°F (-50 to 70°C)	0.1°	±1°C	5ml vaccine bottle. Bottle mimics vaccine temperature and fits in tray.



94460-74



94460-88



94460-73

## Traceable® Refrigerator/Freezer Plus™ Thermometer

### Temperature-buffered bottle insulates sensor from rapid temperature changes

- Triple display simultaneously shows MIN/MAX and current temperatures, °F/°C switchable
- Monitors high and low readings overnight, on weekends, or for any time period - a significant advantage over current read-only temperatures
- Alarm is programmable in 1° increments and alerts user when temperature rises above or falls below a set point
- Supplied: battery, Velcro®, magnetic strips, 10-foot cable, Traceable® Certificate

Cat. No.	Range	Resolution	Accuracy	Probe
94460-88				0.187-inch diameter and ¾-inch long
94460-74	-58.0 to 158.0°F (-50.0 to 70.0°C)	0.1°	±0.5°C	Bottle specifically for refrigerator/freezer applications
94460-73				5ml vaccine bottle



94460-77



94460-76/94460-77



94460-86/94460-87



94460-96/94460-97

## Traceable® Sentry™ Thermometer °F/°C

### Simple one-key reset operation resets MIN/MAX memories

- Constantly monitor high, low and current temperatures
- Sensor and 10-foot cable may be placed underwater, in refrigerator, or freezer
- Unplugging the cable activates a sensor inside the unit for monitoring ambient temperature
- Supplied: battery, probe, 10-foot cable, wall mount, magnet, stand, Velcro®, Traceable® Certificate

Cat. No.	Range	Resolution	Accuracy	Probe
94460-76	-58 to 158°F	1°	±1°C	0.187-inch dia. x ¾-inch
94460-77	-50 to 70°C	1°	±1°C	0.187-inch dia. x ¾-inch
94460-86	-58 to 158°F	1°	±1°C	Bottle specifically for refrigerator/freezer applications
94460-87	-50 to 70°C	1°	±1°C	Bottle specifically for refrigerator/freezer applications
94460-96	-58 to 158°F	1°	±1°C	5ml vaccine bottle. Bottle mimics vaccine temperature and fits in tray.
94460-97	-50 to 70°C	1°	±1°C	5ml vaccine bottle. Bottle mimics vaccine temperature and fits in tray.

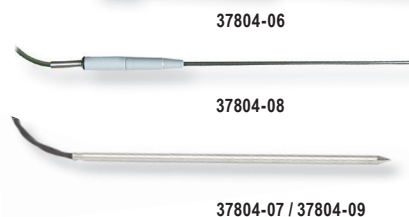
## Traceable® Platinum Ultra-Accurate Reference Thermometer

**Most accurate thermometer available with 0.0001° resolution**

- High-precision unit is designed for years of reliable service even in harshest environments
- Resolution set key changes display to show 1, 2, 3 or 4 digits after decimal
- Internal data logger automatically captures MIN/MAX readings every hour for last 24 hours
- Instant response probe updates readings 3 times per second for liquids, air/gas and semi-solids
- Supplied: battery, platinum probe, cable, computer output, plastic carrying case, Traceable® Certificate



Cat. No.	Unit Range	Probe Range	Resolution	Accuracy	Platinum RTD Stainless-steel Probe
37804-06	-200.00 to 500.000°C	-200.00 to 500.000°C	0.1° to 0.0001	±0.05°C or 0.05% between -80 to 290°C	7" stem, 0.13" diameter, 6' cable
37804-07	-100.00 to 200.00°C	-100.00 to 200.00°C			1" stem, 1/4" diameter, 10' PTFE cable



Accessories	
37804-08	Replacement Platinum RTD stainless-steel Probe
37804-09	Replacement Platinum RTD stainless-steel Bullet™ Probe
90080-21	Data Acquisition System Software
90225-22	Universal AC Adaptor

## Traceable® Digital Thermometer

**The laboratory standard**

- Triple purpose stainless-steel probe for liquids, air/gas, and semisolids
- Ideal for foods, pharmaceuticals, petroleum products, gas systems, soil, ovens, and more
- Unit reads in °C and °F and includes a HOLD key for freezing data on the display for future readings
- Instant HISTORY key recalls minimum and maximum readings over the past 24 hours
- Unit conforms to ITS-90 International Temperature Standard
- Supplied: battery, probe, cable, computer output, plastic carrying case, Traceable® Certificate

Cat. No.	Range	Resolution	Accuracy	Stainless-steel Probe
90080-09	-58.000 to 302.000°F (-50.000 to 150.000°C)	0.0001°	±0.05°C between 0.0 to 100°C	6" stem, 0.3" dia. x 9"; cable: 66"

Accessories				
90080-18	Replacement Probe: -50.000 to 150.000°C	—	±0.05°C between 0.0 to 100°C	6" stem, 0.3" dia. x 9"; cable: 66"
90080-19	Micro Probe: -50.000 to 150.000°C	—	±0.2°C	7 cm stem, 0.1cm dia. x 14cm; 152 cm cable
90080-21	Data Acquisition System Software			
90225-22	AC Adaptor			



## Traceable® High-Accuracy Dual Thermometer

**Dual-probe unit provides exact results for critical requirements, quality control, routine readings**

- Two probes are useful for monitoring inlets and outlets, tracking two tests simultaneously or measuring temperatures in two locations
- Display shows current °F/°C and minimum/maximum temperatures
- Minimum/maximum monitors readings overnight, on weekends, or any time period; unit displays the exact time and date when the minimum and maximum temperature occurred
- Visual/audible alarms are programmable in 0.1° increments and provide alerts when temperature rises above/falls below high/low set points
- Supplied: batteries, flip-open stand, probe, cable, magnetic strips, Velcro®, wall mount, Traceable® Certificate



Cat. No.	Range	Resolution	Accuracy	Probe
94460-98	-58.00 to 158.00°F	0.01°	±0.3°C	1 stainless-steel probe, 1/8" dia., 6 1/4" stem length, 60" cable
94460-99	(-50.00 to 70.00°C)	0.01°	±0.3°C	2 stainless-steel probes, 1/8" dia., 6 1/4" stem length, 60" cable



98768-51

## Traceable® Rapid Response Stainless-steel Folding Thermometer

### Wide-range, high accuracy and fast response temperature readings

- Fold-up, protected probe permits ultimate portability
- Splash-resistant compact design with antimicrobial case inhibits growth of pathogens
- Multiple calibration points (0°C, 100°C, and 200°C)
- Supplied: opening for lanyard, battery, Traceable® Certificate

Cat. No.	Range	Resolution	Accuracy	Dimensions
98768-52	-40.0 to 250.0°C	0.1°	±0.5°C from -20 to 250°C, otherwise ±1°C	4½ x 1½ x ¾"; probe: 2.8 x 0.13" dia
98768-51				6 x 1¼ x ¾"; probe: 4.4 x 0.15" dia



90205-22

## Traceable® Water-Resistant Thermometers

### Water-resistant case, cable, and stainless-steel probe monitors temperature in any wet area

- Water/shockproof case provides flawless readings in freezers, water baths, incubators, tanks
- Stainless-steel probe efficiently monitors temperature in liquids, semi-solids, air/gases
- One-key operation quickly recalls Min/Max readings over any time period, °F/°C switchable
- Supplied: battery, probe, cable, suction cups, magnet, Velcro® strips, Traceable® Certificate

Cat. No.	Range	Resolution	Accuracy	Probe
90205-22	-58 to 572°F (-50 to 300°C)	0.1° from -19.9 to 199.9°C; otherwise 1°C	±1°C between -20 and 100°C	0.14" dia., 5" probe length, 120" cable
98767-33		0.1° from -19.9 to 199.9°C; otherwise 1°C	±0.5°C at tested points	0.14" dia., 5" probe length, 120" cable



## Traceable® Big-Digit Memory Thermometer

### View ambient and probe temperatures from 25 feet

- Dual display permits reading ambient and probe temperatures simultaneously, °F/°C switchable
- MIN/MAX memory readings may be displayed and reset at the touch of a key
- Cable and sensor perform accurately when underwater, always-on instrument reads temperature constantly
- Supplied: flip-open stand, wall mounting, 10-foot cable, Velcro®, Traceable® Certificate, battery

Cat. No.	External probe range	Ambient sensor range	Resolution	Accuracy
90000-75	-58.0 to 158.0°F (-50.0 to 70.0°C)	23.0 to 122.0°F (-5.0 to 50.0°C)	0.1°	±1°C

## Traceable® Extreme-Accuracy Thermometer

### Lab partner delivers exact time/date when temps rise above/fall below set-points

- Two audible and two visual alarms warn when temperatures rise above/fall below set-points, unit displays the exact time and date when alarm was triggered
- Efficient alarms are programmable in 0.1° increments and sound continuously until disabled
- Remarkable, three-line display shows minimum/maximum, current temperatures
- Accurate readings with tip penetration of 1/3-inch, unit reads °C and °F
- Supplied: batteries, flip-open stand, Velcro®, magnet, wall mount, probe, cable, Traceable® Certificate

Cat. No.	Range	Resolution	Accuracy	Probe
90000-23	0.00° (-2.00 to 2.00°C)	0.01°	±0.05°C within ±2°C of standard	⅜" dia., 6¼" stem length, 60" cable
90000-25	25.00° (23.00 to 27.00°C)	0.01°	±0.05°C within ±2°C of standard	⅜" dia., 6¼" stem length, 60" cable
90000-27	37.00° (35.00 to 39.00°C)	0.01°	±0.05°C within ±2°C of standard	⅜" dia., 6¼" stem length, 60" cable
90000-29	0.00°, 25.00°, 37.00°—all 3 above	0.01°	±0.05°C within ±2°C of standard	⅜" dia., 6¼" stem length, 60" cable

90000-23

## Traceable® Lollipop™ Shock/Water-Resistant Thermometers

Featherweight, wide-range lab partner covers 99% of routine temperature measurement needs

- Shock/water-resistant unit delivers reading updates every second
- One-key operation recalls MIN/MAX temperature results, °F/°C switchable
- Supplied: battery, probe, probe cover with pocket clip, Traceable® Certificate

Cat. No.	Range	Resolution	Accuracy
90205-05	-58 to 572°F (-50 to 300°C)	0.1° from -19.9 to 199.9°C; otherwise 1°C	±1°C between -20 and 100°C
98768-49			±0.5°C at tested points



90205-05

## Traceable® Long-Stem Thermometer

Ideal for replacing all glass and mercury thermometers in the lab

- On/off switch provides longer battery life, °F/°C switchable range
- Long stem allows for taking readings while stirring and is ideal for use in incubators and ovens
- Supplied: battery, protective sleeve, Traceable® Certificate

Cat. No.	Range	Resolution	Accuracy	Stem Length	Overall Length
90225-15	-58 to 302°F (-50 to 150°C)	0.1° from -20 to 200° (1° otherwise)	±1°C	8 inches	11 inches
90205-01			±0.2°C at tested points	8 inches	11 inches
94460-40	-58 to 572°F (-50 to 300°C)	0.1° from -20 to 200° (1° otherwise)	±1°C	11½-inches	14¾-inches
90205-02			±0.5°C at tested points	11½-inches	14¾-inches



90225-15

## Traceable® Dishwasher/Metal Thermometers

Reports MIN/MAX temperatures achieved during dish-washing cycle

- Monitors temperatures for proper cleaning, °F/°C switchable
- Water-resistant and metal construction are ideal for food, wet labs, outdoors
- Supplied: clip for attaching to dishwasher rack, battery, Traceable® Certificate

Cat. No.	Range	Resolution	Accuracy	Feature
98767-27	-58.0 to 302.0°F (-50.0 to 150.0°C)	0.1°	±1°C between -20 to 150°C	stainless-steel probe
98767-28	-4.0 to 185.0°F (-20.0 to 85.0°C)			dishwasher clip



98767-27

98767-28

## Traceable® Infrared Thermometer with pocket clip

Easy-to-carry design is ideal for blood bank labs

- Simple point-and-shoot operation, °F/°C switchable
- Unit reads both Fahrenheit and Celsius of any surface—solids, semi-solids, and liquids
- Fixed emissivity is precisely set at 0.95
- Supplied: battery, lanyard, pocket-clip, key-chain, Traceable® Certificate

Cat. No.	Range	Resolution	Accuracy	Field of view
98767-48	-27.0 to 428.0°F (-33.0 to 220.0°C)	0.1°	±1°C + 2%	1:1





## Traceable® Infrared Thermometer Gun

Point-and-read gun provides temperature results of any surface in less than one second

- Easy-read display is back-lit, has low-battery indicator, and tracks maximum readings, °F/°C switchable
- DATA HOLD key freezes display and gives time to accurately record readings
- Emissivity is 0.95 fixed and unit includes an auto-off feature
- Supplied: batteries, Traceable® Certificate

Cat. No.	Range	Resolution	Accuracy	Field of view
98767-45	-76.0 to 932.0°F (-60.0 to 500.0°C)	0.1°	±2% of reading or ±2°C	11:1



## Traceable® Memory Wide-Range Thermometer

High accuracy, wide range Type-K thermometer

- Triple purpose probe may be used to measure temperature of liquids, gases and semi-solids
- Computer output allows thermometer to be connected to a computer or data logger capturing/storing readings
- Count-up timer provides a relative time measurement while taking temperatures and recording MIN/MAX readings, °F/°C switchable
- Probe range (supplied) -50 to 700°C, 6¼" stem, 0.13" dia, 40" cable; meter accepts any Type-J, K or T probe
- Supplied: 40" stainless-steel Type-K thermocouple probe, battery, Traceable® Certificate

Cat. No.	Meter Range	Resolution	Accuracy
91210-05	-328 to 2498°F (-200 to 1370°C)	0.1 from -200 to 640°C (-328 to 990°F) otherwise 1°	±1°C

### Accessories

37804-14	Data Acquisition System
----------	-------------------------



## Traceable® Total-Range Thermometer

Water-resistant design is perfect for use in lab or plant's worst environments

- °F/°C switchable unit can recall MIN/MAX temperature readings captured during any time; updates 2x second
- HI/LO Alarm: indicates when temperature rises above or falls below high/low set points, 1° increments
- Timer feature displays duration of temperature conditions and time tests; capacity: 23 hours 59 minutes to 1 minute; resolution: 1 second
- Probe range (supplied with unit) -40 to 250°C continuous or 300°C short-term; accepts all Type-K thermocouples
- Supplied: flip-out stand, PVC casing, 4 ft cable, Type-K beaded probe, batteries, Traceable® Certificate,

Cat. No.	Meter Range	Resolution	Accuracy
91210-30	-328 to 2498°F (-200 to 1370°C)	0.1° and 1°	±1°C between -50°C to 740°C, otherwise ±2°C

## Traceable® Memory Hygrometer/Thermometer

Extremely accurate and portable

- Microprocessor-based design provides unparalleled accuracy
- Simultaneously displays both temperature and relative humidity on dual 1.12-inch LCD
- 0.9 m cable allows user to retrieve readings from hard-to-reach areas
- Supplied: probe, cable, battery, carrying case, Traceable® Certificate

Cat. No.	Range	Resolution	Accuracy
37950-01	Humidity: 10 to 95% RH	0.1% RH	±2.0%RH mid-range, ±4.0%RH otherwise
	Temperature: -18 to 93°C	0.1°	±1°C between 0 to 40°C, otherwise ±2°C
37950-02	Humidity: 10 to 95% RH	0.1% RH	±2.0%RH mid-range, ±4.0%RH otherwise
	Temperature: -18 to 93°C	0.1°	±1°C between 0 to 40°C, otherwise ±2°C
	Dew Point: 0 to 50°C	0.1°	±2°C

### Accessories

98768-10	33% Calibration Standard with calibration instructions
98768-11	75% Calibration Standard with calibration instructions
37950-70	Data Acquisition System Software



37950-01

## Traceable® Remote Alarm RH/Temperature Monitor

Triple display simultaneously shows minimum, maximum, and current humidity/temperature readings

- Internal Ambient sensor reads temperature and humidity
- Remote humidity/temperature sensor on a 7-foot cable
- Min/Max memories—high/low alarm feature may be set by user in 1% RH or 1° increments
- Perfect for use in hoods, classrooms, stockrooms, environmental chambers and chemical storage areas
- Supplied: battery, humidity/temperature sensor, flip-open stand, wall mount, Traceable® Certificate

Cat. No.	Range	Resolution	Accuracy	Features
98768-48	Humidity: 5.0 to 95.0%	0.1%	±3% RH from 25-75%, ±5% otherwise	Ambient unit: place in an environment
	Temperature: 0.0 to 60.0°C (32.0 to 140.0°F)	0.1°	±0.5°C	
03313-87	Humidity: 5.0 to 95.0%	0.1%	±3% RH from 25-75%, ±5% otherwise	7-foot cable
	Temperature: 0.0 to 60.0°C (32.0 to 140.0°F)	0.1°	±1°C	



03313-87

## Traceable® Digital Humidity/Temperature Meter

Simultaneously displays relative humidity & temperature with dual-recall memories

- Ideal for routine measurements, monitoring around-the-clock, quality-control needs, and critical experimental requirements
- Minimum and maximum memories can be displayed or cleared at any time with the touch of a key
- Fulfills CLIA requirements, °F/°C switchable
- Supplied: wall mount, bench, stand, batteries, Traceable® Certificate

Cat. No.	Range	Resolution	Accuracy	Features
98766-84	Humidity: 25 to 95% RH	1%	±2% RH mid-range to ±4% RH elsewhere	MIN/MAX memory
	Temperature: 32 to 122°F (0 to 50°C)	1°	±1°C	



## Traceable® Digital Humidity/Temperature/Dew Point Meter

Convenient triple memories recall MIN/MAX readouts for RH, dew point, and temperature

- Audible and visual LED alarm may be set to trigger at three different humidity readings (55%, 60% or 65%)
- Solid state sensors deliver response times of less than 30 seconds, °F/°C switchable
- Supplied: wall mount, batteries, Traceable® Certificate

Cat. No.	Range	Resolution	Accuracy	Dew Point
37803-83	Humidity: 1.0 to 99.0% RH	0.1%	±3% mid-range, ±5% elsewhere	14 to 140°F (-10 to 60°C)
	Ambient Temperature: 14.0 to 140.0°F (-10.0 to 60.0°C)	0.1°	±1°C	

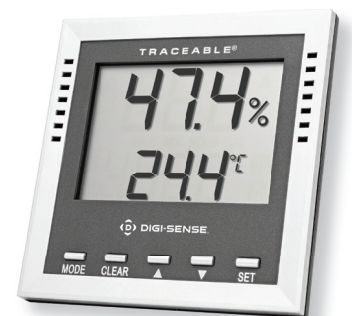


## Traceable® Dew Point/Wet-Bulb/Humidity/Thermometer Alarm

Settable high/low alarms for all four readings

- Unit shows current minimum and maximum readings for dew point, wet-bulb, humidity and temperature
- Alarm sounds for 1 minute and display flashes until readings return to non-alarm conditions
- Supplied: stand, batteries, wall-mount, Traceable® Certificate

Cat. No.	Range	Resolution	Accuracy
90080-03	Humidity: 1.0 to 99.0% RH	0.1%	±4% between 20 to 80% RH
	Temperature: -40.0 to 158°F (-40.0 to 70.0°C)	0.1° below 100°	±1°C



Traceable® Hygrometers/Thermometers



98767-14

## Traceable® Excursion-Trac™ or Memory-Loc™ Datalogging Hygrometers

Perfect for hoods, storerooms, cleanrooms and other environments

- Unit has both ambient and external sensors that both measure humidity and temperature readings
- Stores up to 30 unique alarm events
- Recorded data (CSV file) may be transferred from thermometer to PC or Mac using a USB flash drive—no additional software needed
- Hassle-free retrieval of data—unit can remain in use while downloading/analyzing data

Cat. No.	Parameter	Range	Accuracy	Resolution	Data Overwrite	Memory
<b>Excursion-Trac™</b>						
98767-14	Ambient Humidity External Humidity Ambient Temperature External Temperature	0.0 to 95.0% RH (non-condensing) 32.0 to 145.0°F (0.0 to 65.0°C) -4.0 to 158.0°F (-20.0 to 70.0°C)	3% RH (5 to 75% RH), ±5% RH otherwise ±0.4°C	0.1% RH 0.1°	Yes	525,504 data points
<b>Memory-Loc™</b>						
98767-16	Ambient Humidity External Humidity Ambient Temperature External Temperature	0.0 to 95.0% RH (non-condensing) 32.0 to 145.0°F (0.0 to 65.0°C) -4.0 to 158.0°F (-20.0 to 70.0°C)	3% RH (5 to 75% RH), ±5% RH otherwise ±0.4°C	0.1% RH 0.1°	No	688,086 data points



## Traceable® Thermometer/Clock/Humidity Monitor

Simultaneously displays time of day, temperature, and humidity

- Features: MIN/MAX memory, memory clear, °F/°C switchable, 12/24-hour clock
- Internal sensors make it ideal for use in hoods, storerooms, clean rooms, incubators, drying & environmental cabinets
- At the touch of a button, memory recalls the minimum and maximum temperature and humidity readings
- Supplied: stand, wall mount, double-back tape, batteries, Traceable® Certificate

Cat. No.	Range	Resolution	Accuracy	Size/Weight
90080-06	Time: 12/24 hour clock	1 minute	0.01%	4¼ x 2¼ x ½ inch, 2½ ounces
	Temp: 0.0 to 50.0°C	0.1°	±1°C	
	Humidity: 20 to 90% RH	1%	±5% RH midrange otherwise ±8% RH	



94460-84



94460-85

## Traceable® Radio-Signal Remote Humidity/Thermometer

Monitors humidity and temperature up to 100 feet away

- Unit feature high/low alarms, °F/°C switchable
- Data is transmitted every 30 seconds
- Trend indicators show if humidity is rising or falling
- Additional Traceable Humidity/Thermometer Remote Sensor Module (Cat No. 94460-85); may be set to channel 1, 2, or 3; total of three modules may be used with main unit 94460-84
- Supplied: battery, carrying case, flip-open stand, wall brackets, one remote sensor module Traceable® Certificate

Cat. No.	Range	Resolution	Accuracy
94460-84	Humidity: 25 to 90% RH	1%	±2% RH mid-range to ±4% RH elsewhere
	Temperature: -4.0 to 140.0°F (-20.0 to 60.0°C)	0.1°	±1°C

### Accessories

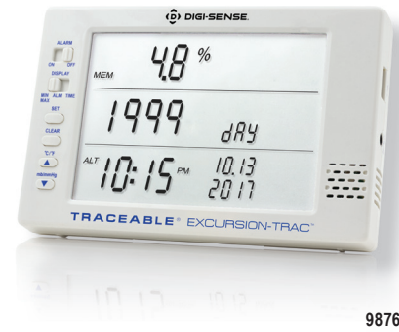
94460-85	Additional Traceable® Humidity/Thermometer Remote Sensor Module
----------	---



# Traceable® Excursion-Trac™ or Memory-Loc™ Datalogging Barometers

Perfect for warehouse, labs and other environments where ambient parameters need to be monitored

- Stores up to 30 unique alarm events
- Altitude Compensation from -100 to 2500 meters
- Recorded data (CSV file) may be transferred from thermometer to PC or Mac using a USB flash drive—no additional software needed
- Hassle-free retrieval of data—unit can remain in use while downloading/analyzing data



98767-15

Cat. No.	Parameter	Range	Accuracy	Resolution	Data Overwrite	Memory
<b>Excursion-Trac™</b>						
98767-15	Barometric Pressure Relative Humidity Temperature	500 to 1030 mbar 0.0 to 95.0% RH (non-condensing) 32.0 to 158.0°F (0.0 to 55.0°C)	±4 mbar 3% RH (5 to 75% RH), ±5%RH otherwise ±0.4°C	1 mbar 0.1% RH 0.1°	Yes	525,600 data points
<b>Memory-Loc™</b>						
98767-17	Barometric Pressure Relative Humidity Temperature	500 to 1030 mbar 0.0 to 95.0% RH (non-condensing) 32.0 to 158.0°F (0.0 to 55.0°C)	±4 mbar 3% RH (5 to 75% RH), ±5%RH otherwise ±0.4°C	1 mbar 0.1% RH 0.1°	No	819,150 data points

## Traceable® Digital Barometer

Digital Barometer is the perfect unit for plants, labs, and all other environments where there is a need to monitor conditions of environmental air parameters

- A four-line LCD simultaneously shows barometric pressure, temperature, relative humidity, barometric pressure trend and time
- Min/Max readings for barometric pressure, temperature and relative humidity are stored every hour for last 24 hours and are available for recall at the touch of a button
- Barometric pressure trend shows in bar-chart format current and past 1/3/6/12 and 24-hour trending readings
- Altitude compensation: -100 to 2500 meters
- Computer output allows unit to be connected to a computer using the accessory Computer Data Acquisition System to permanently capture readings
- Supplied: Traceable® Certificate, wall mount, flip open stand and batteries



Cat. No.	Parameter	Range	Resolution	Accuracy
68000-49	Barometric pressure	500 to 1030 millibars (14.77 to 30.41 inHg)	1 mbar (0.01 inHg)	±4 mbar (±0.12 inHg)
	Temperature	32 to 131°F (0 to 55°C)	0.1°	±0.4°C (±0.8°F)
	Humidity	0 to 95% RH	1%	±3% RH between 5 to 75%, otherwise ±5% RH

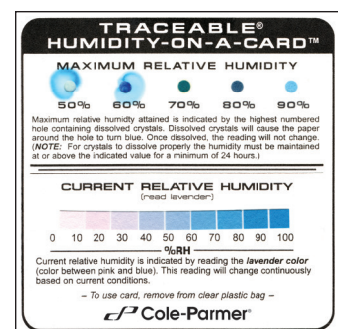
Accessories	
68000-51	Data Acquisition System Software

## Traceable® Humidity-on-a-Card™

Color changes from blue to lavender in increments of 10% RH

- Individually sealed cards indicate both current humidity and the maximum humidity attained
- Maximum relative humidity attained is indicated by the highest numbered hole containing dissolved crystals
- Monitor humidity levels in shipments, optics and packaging
- Supplied: Traceable Certificate®

Cat. No.	Range	Resolution	Accuracy	Size	Quantity
03313-06	Humidity: 0 to 100% RH	10% RH	±5% RH at 75°F (24°C)	4 x 4 inches	6/pk



Traceable® Hygrometers/Thermometers

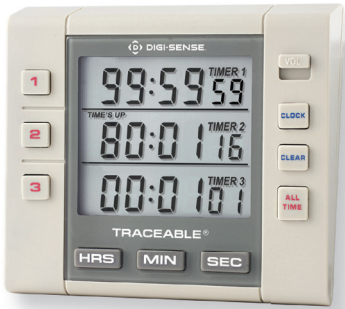


## Traceable® Four-Channel Alarm Timer

The lab's most popular timer

- Features: count up/down, memory recall, alarm, 12/24 hour clock
- Massive ¾-inch high display allows viewing from across the lab
- Remarkable memory returns display to previously programmed countdown time at the touch of a button
- High decibel alarm signals for 1 minute and may be silenced manually
- Supplied: clip, stand, magnet, battery, Traceable® Certificate

Cat. No.	Timing Capacity	Resolution	Accuracy	Channels
98768-50	99 hours, 59 minutes, 59 seconds	1 second	0.01%	4



## Traceable® Three-Channel Alarm Timer

Innovative timer has programmable alarm with adjustable volume control for any environment

- Features: count up/down, memory recall, alarm, clock, adjustable alarm duration/volume
- Triple display shows 3 different times at once; tests can be started individually or simultaneously
- Adjustable volume alarm can be set to sound for 60 seconds or to sound continuously until cleared
- Supplied: battery, Traceable® Certificate

Cat. No.	Timing Capacity	Resolution	Accuracy	Channels
94411-10	99 hours, 59 minutes, 59 seconds	1 second	0.001%	3



## Traceable® Three-Line Alarm Timer

Unique, 3-channel timer is perfect for use in all count up/down timing combinations

- Features: alarm for each channel sounds for 60 seconds, count up/down, memory recall, clock
- Display: 3-line LCD with 0.37-inch high digits
- Supplied: clip, stand, magnet, battery, Traceable® Certificate

Cat. No.	Timing Capacity	Resolution	Accuracy	Channels
94461-23	99 hours, 59 minutes, 59 seconds	1 second	0.01%	3



94461-16

## Traceable® Flashing LED Alert Big-Digit Alarm Timer

Big-Digit Timer has it all—adjustable alarm volume, flashing led, superb accuracy

- Features: count up/down, flashing LED, adjustable volume
- Green light flashes every second after timing begins; red LED indicator flashes when zero is reached and shows time elapsed since alarm
- Adjustable volume: high decibel, low decibel, or off for silent visual flashing LED operation
- Supplied: batteries, magnetic back, flip-open stand/ clip, opening for lanyard, Traceable® Certificate

Cat. No.	Timing Capacity	Resolution	Accuracy	Channels
94461-16	99 hours, 59 minutes, 59 seconds	1 second	0.01%	2
94461-15	99 minutes, 59 seconds	1 second	0.01%	1

## Traceable® Waterproof/Steam-proof Timer

Affix this timer anywhere using removable suction cup

- Features: countdown/up, memory recall, waterproof, steamproof
- Ideal for use in wash-down areas, wet labs, manufacturing plants or field work
- Impressive memory remembers most-recently-programmed setting for recurring lab experiments
- Supplied: stand, removable suction-cup, battery, Traceable® Certificate

Cat. No.	Timing Capacity	Resolution	Accuracy	Channels
98766-79	99 minutes, 59 seconds	1 second	0.01%	1



## Traceable® Clip-It™ Timer

Perennial favorite multi-tasking timer attaches to any lab surface

- Features: count up/down, alarm
- Helpful memory saves last programmed setting for quick recall—useful for repetitive timing events
- Supplied: clip, magnet, opening for lanyard, battery, Traceable® Certificate

Cat. No.	Timing Capacity	Resolution	Accuracy	Channels
08610-32	99 hours, 59 minutes, 59 seconds	1 second	0.005%	1



## Traceable® Waterproof/Shockproof Stopwatch

General purpose stopwatch is waterproof to three atmospheres

- Features: waterproof, chronograph, time of day in hours, minutes, and seconds, date, day, and alarm
- Stopwatch functions: single action, time out, cumulative split, interval split, continuous timing
- Supplied: battery, key-chain, lanyard, Traceable® Certificate

Cat. No.	Timing Capacity	Resolution	Accuracy
94460-55	23 hours, 59 minutes, 59 seconds	1/100 of a second (between 0 to 30 minutes)	0.01%
		1 second (between 31 min to 23 hr 59 min 59 sec)	



## Traceable® Jumbo-Digit Stopwatch

Vivid, large stopwatch digits provide ease in reading

- Features: water-resistant, time-of-day alarm, ABS plastic case, AM/PM, date, day, alarm
- Stopwatch functions: single-action, time-out, cumulative-split, and continuous timing
- Supplied: Velcro®, Traceable® Certificate, battery, lanyard, detachable clip

Cat. No.	Timing Capacity	Resolution	Accuracy
94460-28	23 hours, 59 minutes, 59 seconds	1/100 of a second (between 0 to 30 minutes)	0.001%
		1 second (between 31 min to 23 hr 59 min 59 sec)	



Traceable® Timers/Stopwatches



## Traceable® Calendar/Thermometer/Clock

**Clock has stylish 2-tone color and slim silhouette**

- Features: time, date/day, temperature
- Supplied: battery, wall-mount, Traceable® Certificate

Cat. No.	Feature parameters	Resolution	Accuracy	Size/Weight
08610-26	Time: 12/24 hour clock	1 minute	0.01%	9¼ x 10 x 1", 19 ounces
	Temp: -5 to 50°C	0.1°	n/a	



## Traceable® Clock/Thermometer/Humidity

**Simultaneously displays time, temperature, and humidity on wall or lab bench**

- Features: analog time, temperature; humidity
- Crisp reading dials and bright orange sweeping second hand provides superior visibility
- Low-profile slim design has impact-resistant ABS case
- Supplied: battery, wall mount screw, Traceable® Certificate

Cat. No.	Feature parameters	Resolution	Accuracy	Size/Weight
94460-35	Time: AM/PM clock	1 second	0.01%	Clock dial: 9 inches Temp/Humidity dials: 3 inches Overall: 12½ x 11 x 1-inch; 1½ pounds
	Temp: -37 to 47°C	2°C	n/a	
	Humidity: 8 to 92%	2%	n/a	



## Traceable® Splash-Resistant Wall Clock

**Attractive 12-inch wall clock tell time of day to second**

- Features: water/dust resistant sealed case, bright sweeping second hand
- Supplied: battery, wall mount, Traceable® Certificate

Cat. No.	Time feature	Resolution	Accuracy	Size/Weight
94460-50	AM/PM clock	1 second	0.01%	12½-inch diameter, 1 pound



## Traceable® Stick-it™ Mini-Clock

**Small size makes mini-clock perfect for work area**

- White timing hands give superior visibility
- Flat bottom permits standing on shelf, desk or bench
- Supplied: Velcro®, double-sided tape, battery, Traceable® Certificate

Cat. No.	Time feature	Resolution	Accuracy	Size
08610-20	AM/PM clock	1 second	0.01%	1.6 inch dia. x 0.3 inch

# Traceable® Conductivity and pH Buffer Standards

## Traceable® pH Buffer Standards (CRM)

The most accurate pH Standards available anywhere

- 100% compatible with all makes of instruments and electrodes
- Select values manufactured to IUPAC (International Union of Pure and Applied Chemistry) formulation—features long term buffer stability and buffer resistance to temperature changes during pH meter calibration
- Only Certified Reference Material meets all test requirements for Federal, State, and local agencies
- Triple-layered proprietary packaging—aluminum foil, PET and low-density polyethylene bag—prevents contamination by permeable gases and provides 2-year shelf life
- Each 16 ounce bottle or six pack single-use 100ml container is supplied with an individual temperature compensation chart, traceability information, Traceable® Certificate



Traceable® pH Buffer Standards Certified Reference Material (CRM) (CLEAR)				
Size	Accuracy	Cat. No.	pH Value	
16 oz. bottle	25°C is $\pm 0.010$ pH	00655-40	4.005	
		00655-42	7.000	
		00655-46	7.416	
		00655-44	10.012	
100 ml One-Shot™ (6-pack)	25°C is $\pm 0.010$ pH	00655-30	4.005	
		00655-32	7.000	
		00655-36	7.416	
		00655-34	10.012	
One-Shot™ Assortment (6-pack)		98767-73	4.005 — 10.012	

Traceable® pH Buffer Standards Certified Reference Material (CRM) (COLOR)					
Size	Accuracy	Color	Cat. No.	pH Value	
16 oz. bottle	25°C is $\pm 0.010$ pH	Red	98767-74	4.005	
		Yellow	98767-75	7.000	
		Blue	98767-76	10.012	
100 ml One-Shot™ (6-pack)	25°C is $\pm 0.010$ pH	Red	98767-77	4.005	
		Yellow	98767-78	7.000	
		Blue	98767-79	10.012	
One-Shot™ Assortment (6-pack)		Red/Yellow/Blue	98767-80	4.005 — 10.012	

## Traceable® pH/ORP Meter

Simply dip into solution and read pH or ORP

- Triple display shows pH or ORP measurement, temperature and time/date
- Compact (water-resistant-IP67) instrument fits in the palm of your hand
- Ideal for wastewater, water quality and environmental applications
- Twenty-five point memory storage with time/date stamp
- Supplied: detachable probe, battery, probe cover, Traceable® Certificate, carrying case, Traceable® One-Shot™ pH Buffer Standards (CRM) 6-Pack Assortment



Cat. No.	Measurement	Range	Resolution	Accuracy
98767-09	pH	0.00 to 14.00 pH	0.01 pH	$\pm 0.02$ pH
	ORP	-1800 to 1800 mV	0.1mV <1000mV (1mV $\geq$ 1000mV)	$\pm 20$ mV
	Temperature	32 to 140°F (0 to 60°C) (switchable)	0.1° (1° when >100°)	$\pm 1$ °C

Accessories	
98768-07	Probe Extension Cable
98768-08	Replacement Probe
98767-73	Traceable® One-Shot™ pH Buffer Standards (CRM) 6-Pack Assortment

## Traceable® Conductivity and pH Buffer Standards

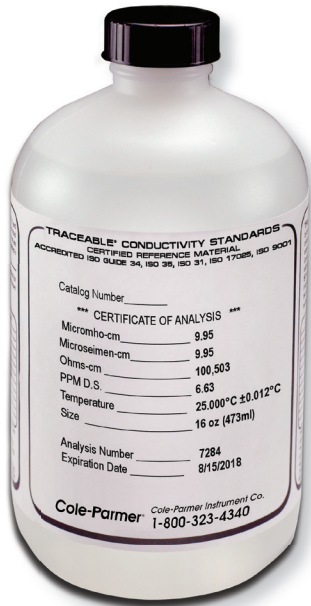
### Traceable to NIST for accuracy

To assure accuracy an individually serial-numbered Traceable® Certificate is supplied from manufacturer with both bottles and One-Shots™ to indicate traceability to standards provided by NIST (National Institute of Standards and Technology) and/or a National Standards Laboratory. A2LA accredited certification provides highest achievable level of quality assurance, documentation, and accuracy. Certified Reference Materials are produced by an A2LA accredited ISO Guide 34 (1750.02) certified reference material producer and by an A2LA accredited ISO/IEC 17025 (1750.01) calibration laboratory. Additional guidelines include ISO Guide 31 (certificate content), and ISO Guide 35 (statistical analysis), and ISO 9001 accreditations (certified quality manufacturer).

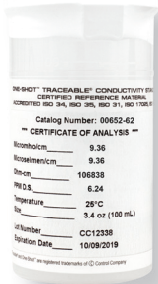
## Traceable® Conductivity Standards (CRM)

### Highest accuracy available assuring reliable results

- Certified Reference Material
- 100% compatible with all conductivity meters
- Each bottle or One-Shot™ is labeled indicating conductivity, resistivity and dissolved solids
- Accuracy at 25°C is ±0.25 microsiemens for 1, 5, 10 microsiemen solution or ±0.25% for other solutions or the uncertainty noted on the certificate
- Supplied: 16 ounce bottle, an individual temperature compensation chart, traceability information, Traceable® Certificate



00652-24



00652-62

## Traceable® One-Shot™ Conductivity Standards (CRM)

### Calibration within disposable container eliminates contamination

- Certified Reference Material
- 100% compatible with all conductivity meters
- Accuracy: certificate stated uncertainty, or ±0.25 microsiemen or ±0.25%
- Supplied: 6-pack 100 ml container, step-by-step calibration instructions, individual temperature compensation charts, traceability information, Traceable® Certificate

Traceable® Conductivity Standards, Certified Reference Materials

Cat. No. 16 oz. bottle ISO Guide 34	Cat. No. Individually Tested 16 oz. bottle ISO 17025	Cat. No. 100 ml One-Shot™ (6-pack) ISO Guide 34	Microsiemens/Micromhos	Megohms	TDS/PPM
00652-20	00652-40	—	1	1	0.66
00652-22	00652-42	00652-60	5	0.2	3.3
00652-24	00652-44	00652-62	10	0.1	6.6
00652-26	00652-46	00652-64	100	0.01	66
00652-28	00652-48	00652-66	1000	0.001	666
00652-30	00652-50	00652-68	1413	0.00071	933
00652-32	00652-52	00652-70	10000	0.0001	6666
00652-34	00652-54	00652-72	100000	0.00001	66666
00652-53	00652-56	00652-76	150000	0.000006	100000
00652-55	00652-58	00652-78	200000	0.000005	133333
—	—	00652-74	Assortment (one each of above One-Shot™, except 00652-60, 00652-76, 00652-78)		

## Traceable® Portable Conductivity Meter

### Quick answers, accurate results

- Automatic range changes; automatic and manual temperature compensation
- Four unique calibration points may be entered into memory utilizing solution standards; settings are stored even when unit is off
- Results displayed are conductivity (microsiemens) and resistivity (megohms), dissolved solids (parts per million), concentration (user-defined units), salinity (oceanographic units) and temperature (F/C)
- Supplied: probe, cable, battery, Traceable® Certificate



Cat. No.	Measurement	Range	Accuracy
19601-04	Micromhos (microsiemens)	0.01 to 20,000	±0.3% +1 digit (0.1 to 1999 Micromhos)
	Megohms	0.001 to 2,000	
	Dissolved Solids/ Parts Per Million	0.1 to 20,000	

#### Accessories

19601-26	Replacement Conductivity Probe— Glass, K=1; Probe range: 0.05 to 200,000 micromhos
19601-28	Accessory Conductivity Probe— Unbreakable Epoxy, K=1; Probe range: 1.0 to 200,000 micromhos

## Variable-Speed Peristaltic Tubing Pump

Compact, variable-flow, bi-directional pump offers adjustable flow delivery

- Ideal for use with conductivity flow-thru cells, liquid chromatography, collecting fractions, pH/circulating fluids or buffers in baths, and moving corrosive materials
- Five different tubing sizes provide fine resolution with a wide flow range; revolution of one roller delivers a precisely measured volume specific to the tubing size and motor speed
- Fluid contacts only tubing for contamination-free pumping
- Tubing may be used with fluid temperatures from  $-80$  to  $500^{\circ}\text{F}$  ( $-62$  to  $260^{\circ}\text{C}$ )
- Pump has a purge/prime switch for high-speed emptying/filling, reverses at touch of a switch
- Supplied: silicone tubing, polypropylene fittings/nipples, AC adaptor, accessory battery connector



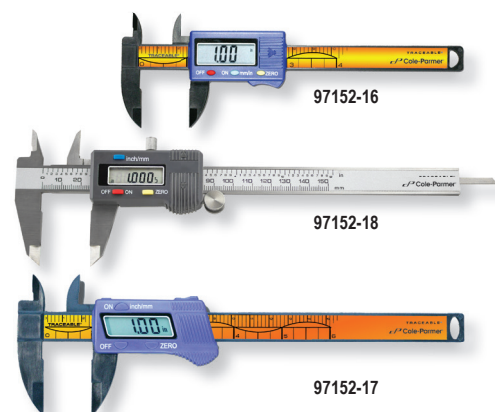
Cat No. Flow rate range

73160-30	0.005 to 1.8 ml/minute
73160-31	0.03 to 8.20 ml/minute
73160-32	0.4 to 85.0 ml/minute
73160-33	4.0 to 600 ml/minute

## Traceable® Digital Calipers

Ideal for measuring inside diameter, outside diameter and depth

- Designed for laboratory use, measures in inches and millimeters
- Zero button instantly sets unit to zero when jaws are at any position—permits, without calculations, setting a Floating Zero™ or reference point to read greater than or less than results with a minus sign displayed
- No lubrication is ever required on the ultra-smooth slide bar, runs on the supplied battery for 10,000 hours
- Supplied: carrying case, battery, Traceable® Certificate



Cat. No.	97152-18	97152-19	97152-16	97152-17
Material	Stainless-steel		Carbon Fiber	
Measuring range	6"/150mm	8"/200mm	4"/100mm	6"/150mm
Resolution	0.0005 inch/0.01mm		0.01 inch/0.1mm	
Accuracy	$\pm 0.001$ inch or $\pm 0.03\text{mm}$		$\pm 0.01$ inch or $\pm 0.2\text{mm}$	
Depth Bar	Yes		No	
Thumb roller/Lock screw	Yes		No	
Non-metallic/non-conductive	No		Yes	
Dimensions	9 x 3 inches	11 x 3 inches	7 x 2½ inches	9½ x 3 inches
Weight	5 ounces	6 ounces	1 ounce	2 ounces

## Traceable® SpatulaBalance™

Unique spatula both scoops material and displays weight

- Three position soft-touch keys in the handle tares (sets to zero), holds (freezes display) and changes grams to ounces
- Scoop detaches from balance for dishwasher-safe cleaning
- LCD indicates low battery
- Markings on see-through scoop are graduated from 5 to 30 milliliters in 5 milliliter increments for weighing liquids with ease
- Supplied: batteries, detachable scoop, Traceable® Certificate



Cat. No.	Range	Resolution	Accuracy	Scoop capacity
01019-11	0 to 300.0 g (0 to 10.580 oz)	0.1 g (0.005 oz)	$\pm 0.2$ g or $\pm 0.25\%$	30 ml/1.1 fl. oz (vol: 32 cm <sup>3</sup> /1.95 inch <sup>3</sup> )

Accessories

98768-12	Replacement scoop, 30 ml
98768-01	Accessory scoop, 40 ml



## Clean-Wipes™

### Universal clean-up tool

- Strong, lint-free, non-woven soft cloths will not scratch surfaces
- Pre-moistened Clean Wipes™ clean even the dirtiest parts
- Ideal for wiping optical parts, microscopes and lenses
- Ability to choose solution of choice with Dry Clean Wipes™—simply add 29.5 ml to canister
- Individually dispensed, reclosable container, snap-on sealed top eliminates contamination, dust, and dirt

Cat. No.	Liquid Solution	Quantity/canister
33675-03	70% reagent-grade isopropyl alcohol and 30% reagent-grade deionized water	100 wipes
33675-05	100% pure reagent-grade deionized water	100 wipes
33675-07	Dry—user adds any solution	100 wipes

## Optic™ Glass Wipes

### Made of lint-free microfiber cloth

- Non-woven, lint-free cloth is pre-moistened with a unique formulation—easily removes oil, grease and lint
- Designed specifically for wiping goggles, eyeglasses, lenses, microscopes and fume hood windows
- Individually dispensed, wipes are handy and ready for instant use

Cat. No.	Size	Quantity/canister
86476-50	6 x 9-inch wipes	100 wipes

## Cheesecloth Wipes

### Ideal for wiping cuvettes, microscopes, glassware, syringes, pipettes and pH electrodes

- Meets all cleanliness specifications of USP (United States Pharmacopoeia) and Federal Specification CCC-G-101c
- Pure wipes absorb 6 times their weight of solvents and aqueous solutions
- Certified to be 100% pure cotton of reagent-grade quality and purity
- Can be used as a filtering material due to their inertness to harsh solvent

Cat. No.	Size	Quantity
33670-14	9 inch-square pad (8-ply) unfolds to approximately 18 x 36 inch	60/dispenser box
33670-15	4 inch-square pad (8-ply) unfolds to approximately 7 x 14 inches	200/box
33670-16	36 inches wide	100-yard bolt

## Counter-Pen™

### The ideal cell growth colony counter

- Combination marker and digital counter designed for the lab and plant
- Sound and count occur simultaneously when black mark is made with felt-tipped pen
- Essential for counting cell growth on petri dishes, inventory parts, and tally samples received
- Pen marks hold place if interrupted and counter holds total
- Supplied: replaceable pen, cap, battery

Cat. No.	Counting quantity	Size
20610-30	99,999	152 x 16.7



## Illuminated Magnifiers

Powerful lighted magnifiers provide perfect-focus and defined view of surface details

- Features state-of-the-art LED lamps and provide evenly-distributed light over surface being observed
- Low-power consumption and high-efficiency lamps improve battery life and performance

Cat. No.	Magnification	Magnifying lens size	Features
98766-57	2X with 4X spot	3-inch diameter	illuminated, hand-held
98766-58	4X	1¾-inch diameter	illuminated, hand-held



98766-57

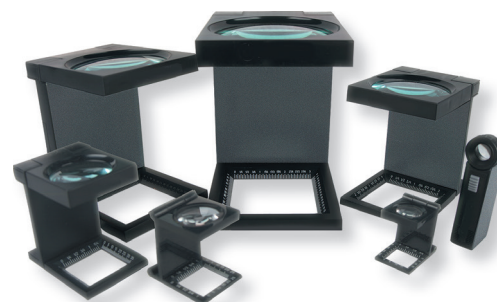
98766-58

## Hands-Free™ Fold-up Magnifiers

White ruler markings in both inches and millimeters assist with measuring

- All glass optics assure perfect focus with zero distortion
- Designed specifically for use in quality control, labs, food, electronics, manufacturing
- Hands-Free™ Magnifiers allow two-handed examination of objects
- Folds up for compact storage

Cat. No.	Magnification	Lens Diameter	Lighted	Replacement Battery
98766-62	2.5 X	4¾ inches	YES	AA, 4 each
98766-63	2.5 X	3½ inches	YES	AA, 4 each
98766-64	3.0 X	3 inches	NO	n/a
98766-65	3.5 X	2 inches	NO	n/a
98766-66	5.0 X	1¼ inches	NO	n/a
98766-67	7.0 X	¾ inches	NO	n/a
98766-68	10.0 X	½ inches	YES	AAA, 2 each



## Adjustable Spray Wash Bottles

Convenient double headed design—adjustable spray nozzle

- Instant-off trigger release eliminates messy drips
- Chemical-resistant and virtually unbreakable bottles are made of high-density polyethylene (HDPE), sprayer is made of polypropylene
- Bottles may be gas or chemically sterilised, dishwasher safe
- Double-headed feature (Cat. No. 98766-55) eliminates removing a dripping pump and allows refilling in seconds through a separate opening

Cat. No.	Features	Volume	Quantity
98766-55	Double-headed	1000 ml	1
98766-56	Adjustable spray nozzle	240 ml	3/pack



# Traceable® Products FAQ

## What is Traceable®?

Traceable® means that a unit is individually serialized, calibrated, and certified with an unbroken chain of traceability to the NIST.

In the context of measurement science, traceability is the result of a measurement can be traced back to a national authority such as the National Institute of Standards and Technology (NIST), a United States Government Agency within the Commerce Department.

## Why Traceable®?

For a critically controlled and certified process, make sure that you are using calibrated instruments. Traceable® units come with a unique and individually serialized certificate that shows all of the information needed for validation.

You can be confident in the readings that you are getting and our units are always cost effective.

## What are MIN/MAX?

Min/Max are measurement readings recorded into memory signifying the lowest (minimum) value achieved and highest (maximum) value achieved since instrument's memory was cleared. Min/Max readings are NOT a settable feature; instruments automatically detect Min/Max.

## What are Hi/LO Alarms?

Hi/Lo describes a settable alarm. If the measured temperature value of an instrument registers above a high alarm set value, the instrument will alarm. Similarly, if the measured temperature value of an instrument registers below your low alarm set value, the instrument will alarm.

Example: If monitoring temperature a low alarm is set to 2°C and high alarm is set to 8°C, alarm will sound if the instrument detects a value below 2°C or above 8°C.

## What is the function of a bottle/ vaccine probe?

Bottle probes are useful for monitoring temperature inside refrigerators where door is likely to be opened on a regular basis. A probe sealed within the bottle mimics temperature responses of products within the refrigerator rather than the air temperature, which will be affected more dramatically by the door opening. Vaccine probe follows the same concept but is similar dimensions to most vaccine bottles.



### Measure

- Accredited Calibration
- Digital Display
- Wide-Range



### Memory

- Measure Features +**
- Min/Max Memory
  - High/Low Alarms



### Datalogger

- Memory Features +**
- Trac™ Temp, RH, mbar and more
  - Download up to 525,000 readings
  - Analyze your results



### Connected

- Datalogger Features +**
- 24/7 Worry-free Monitoring
  - Real-Time Mobile & E-mail Alerts
  - Simple Setup & Use

# Traceable® Certificate assures accurate lab tests

All Traceable® products are provided with a Traceable® Calibration Certificate from our ISO 17025 calibration laboratory and ISO Guide 34 Certified Reference Material Producer. Timer, thermometer, hygrometer, barometer, scale, balance, conductivity cell, conductivity solution, conductivity meter, pH solution, salinity meter, and caliper certificates are accredited by the American Association for Laboratory Accreditation (A2LA).

A2LA is widely recognized internationally through bilateral and multilateral agreements and its participation in the International Laboratory Accreditation and Multilateral Recognition Arrangement (ILAC/MRA). Through Control Company's A2LA Accreditation; Traceable® Certificates are internationally recognized by Accreditation Agencies and Services in over 75 countries throughout Europe, the Middle East, North America, South America, Asia, and Africa.

Accredited by A2LA (The American Association for Laboratory Accreditation) dedicated to "one test accepted everywhere, one accreditation accepted everywhere".

A2LA is your assurance of internationally recognized technical laboratory competence.

A2LA is a signatory of the ILAC/MRA.

Displays catalog number for complete product reference

Calls out the test equipment used for calibration

Reports environmental conditions at the time of measurement

Spells out uncertainty confidence level

Lists specific conditions that may affect product accuracy

Supplied from our ISO 9001 quality facility certified by DNV

**Traceable® Certificate**

Calibration complies with ISO/IEC 17025, ANSI/ISO/IEC 17025-1, and 9001

Cert. No. 4000-50191

Traceable® Certificate of Calibration for Digital Thermometer

ILAC-MRA ACCREDITED Calibration Certificate No. 17025-01

**Instrument Identification:**  
Model: 90080-09 SN: 430187328 Manufacturer: Control Company

**Standards Equipment:**

Description	Serial Number	Due Date	NIST Traceable Reference
Temperature Calibration Bath TC-231	A17118	2/13/14	090332071
Thermistor Module	3039	2/20/14	6-B4829-1-1
Temperature Calibration Bath TC-218	A23332	11/09/14	1000327261
Thermistor Module	A27129	11/09/14	M-B15FW-1-1
Temperature Calibration Bath TC-236	5200	11/09/14	1000327261
Thermistor Module	B91275	8/09/14	B0824009
Temperature Calibration Bath TC-236	A27129	11/09/14	02718063
Thermistor Module	5267	7/24/14	100228041
Temperature Calibration Bath TC-275	B46380	6/26/14	
PRT Temperature Probe	02022		
Digital Thermometer	B10815		

**Certificate Information:**  
Technician: 104 Procedure: CAL-08  
Test Conditions: 25.5 °C 43.0 %RH 1019 mbar Cal Date: 4/04/15 Cal Due: 4/04/17

**Calibration Data: (New Instrument)**

Unit(s)	Nominal	As Found	In Tol	Nominal	As Left	± Tol	Min	Max	±U	±UR
°C	N.A.	24.999	Y	0.000	25.000	±0.002	24.949	25.049	0.014	±0.1
°C	N.A.	50.000	Y	50.000	50.000	±0.002	49.950	50.050	0.014	±0.1
°C	N.A.	100.000	Y	100.000	100.000	±0.002	99.950	100.050	0.018	±0.1

**Maintaining Accuracy:**  
This instrument was calibrated using instruments traceable to National Institute of Standards and Technology. The accuracy of the calibration is based on the accuracy of the instruments used for calibration. The accuracy of the measurement is dependent on the accuracy of the instrument being calibrated. The accuracy of the measurement is dependent on the accuracy of the instrument being calibrated. The accuracy of the measurement is dependent on the accuracy of the instrument being calibrated.

**Recalibration:**  
For factory calibration and re-verification traceable to National Institute of Standards and Technology.

CONTROL COMPANY 4455 Rex Road Friendswood, TX 77546 USA  
Phone: 281 482-1714 Fax: 281 482-3448 service@control.com

Traceable is a registered trademark of Control Company

Conforms to universally recognized ISO/IEC 17025 (1750.01) Standard, a requirement for any ISO 9001 quality facility

Establishes with reference numbers the unbroken chain of traceability to NIST

Displays serial number for total product identification

Spells out test uncertainty ratio

Indicates Calibration Due Date

Specifies Calibration Date when the unit was tested

Signed by the Technical Manager

Provides measurement test results for your specific unit

Signed by the Quality Manager



## Contact Us

<b>UK</b>	<b>T:</b> +44 (0) 1480 272279	<b>E:</b> <a href="mailto:info@coleparmer.co.uk">info@coleparmer.co.uk</a>	<b>W:</b> <a href="http://ColeParmer.co.uk">ColeParmer.co.uk</a>
<b>Germany</b>	<b>T:</b> +49 (0) 9377 92030	<b>E:</b> <a href="mailto:sales@coleparmer.de">sales@coleparmer.de</a>	<b>W:</b> <a href="http://ColeParmer.de">ColeParmer.de</a>
<b>France</b>	<b>T:</b> +33 (0) 1486 37800	<b>E:</b> <a href="mailto:cpcontact@coleparmer.com">cpcontact@coleparmer.com</a>	<b>W:</b> <a href="http://ColeParmer.fr">ColeParmer.fr</a>
<b>Italy</b>	<b>T:</b> +39 (0) 1313 89513	<b>E:</b> <a href="mailto:itsales@coleparmer.com">itsales@coleparmer.com</a>	<b>W:</b> <a href="http://ColeParmer.com">ColeParmer.com</a>
<b>USA</b>	<b>T:</b> +1 847 549 7600	<b>E:</b> <a href="mailto:sales@coleparmer.com">sales@coleparmer.com</a>	<b>W:</b> <a href="http://ColeParmer.com">ColeParmer.com</a>