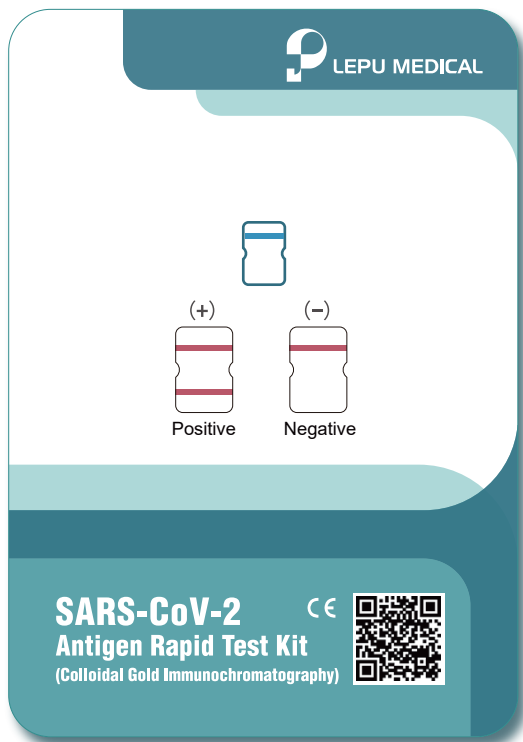


# SARS-CoV-2 CE

## Antigen Rapid Test Kit

(Colloidal Gold Immunochromatography)



- ① Non-invasive
- ② Simple to use
- ③ Convenient, no devices required
- ④ Rapid, get result in 15 minutes
- ⑤ Stable, with high accuracy
- ⑥ Inexpensive, cost-efficiency



Hospital



Test Site



Airport



Station



Hotel

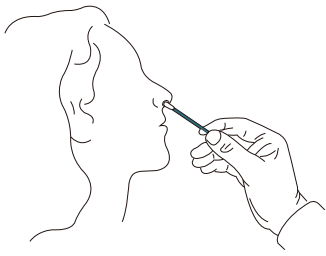


Corporation

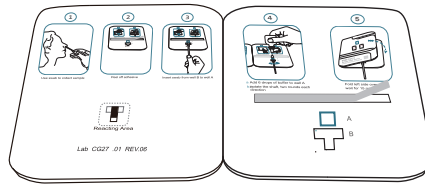


Mass  
Screening

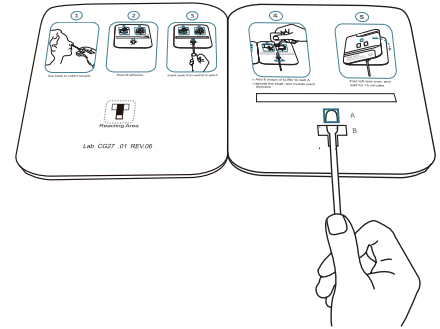
## Instruction



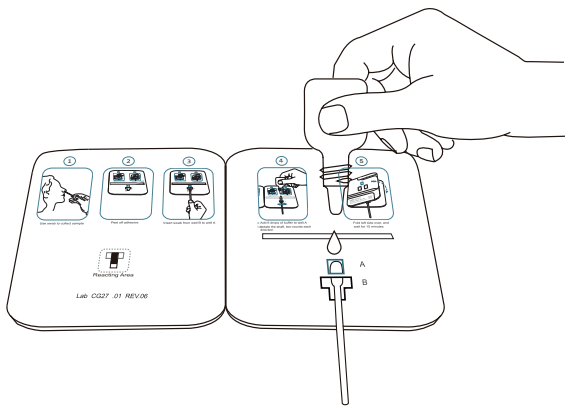
Step 1: Use swab to collect sample.



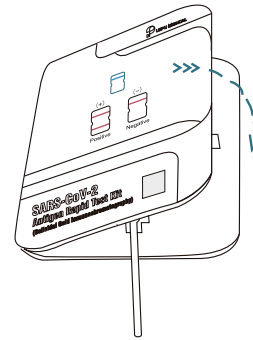
Step 2: Peel off adhesive.



Step 3: Insert swab from well B to well A.



Step 4: a. Add 6 drops of buffer to well A  
b. Rotate the shaft, two rounds each direction.



Step 5: Fold left side over, and wait for 15 minutes.

## Result Interpretation

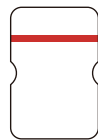
Positive

(+)

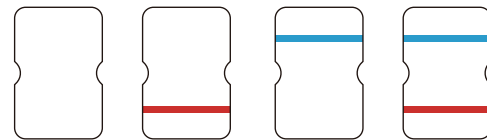


Negative

(-)



Invalid



### BEIJING LEPU MEDICAL TECHNOLOGY CO., LTD.

Building 7-1 No.37 Chaoqian Road, Changping District, Beijing, 102200, P.R.China

Tel: +86-10-8012 3964

Email: lepuservice@lepumedical.com

Web: en.lepumedical.com