

MODEL 2500

The Distek Model 2500 Dissolution System offers great flexibility and configurability. It can be configured as USP Apparatus 1, 2, 5 and 6 plus intrinsic dissolution. The extensive users, method and reporting storage capabilities are enabled by a brilliant touch screen.

Unparalleled control of the instrument plus automatic storage of component serial numbers and automatic qualification reminders make the Model 2500 robust and reliable enough for QC applications yet flexible enough for R&D use.

- **VOLUME FLEXIBILITY**

Accommodates up to 8 vessels ranging in size from 100 mL (utilizing Distek's small volume conversion kit) to 2L, allowing the user to run a diverse range of tests.

- **SELF-PRIMING WATER CIRCULATOR / HEATER**

The self-priming design and precise microprocessor control allow for improved temperature uniformity and reduced heating times. The low-profile design allows the circulator to be stowed behind the bath, requiring no additional bench space.

- **ELECTRONIC QUALIFICATION GUIDANCE**

Settable automatic electronic instrument requalification reminders eliminate missed validation dates and ensure continuous instrument uptime.

- **COLOR TOUCH SCREEN DISPLAY**

The icon driven user interface lowers overall cost by reducing training time and user errors while maximizing productivity and command of the dissolution test.

- **QUICK CHANGE PADDLES AND BASKETS**

Interchangeable stirring elements coupled with the automatic height adjustment provide a fast transition between Apparatus 1 and 2 without having to remove the shaft.

- **AUTOMATIC HEIGHT ADJUSTMENT**

Setting the height is done through a one-time adjustment and utilization of the interchangeable paddles and baskets.

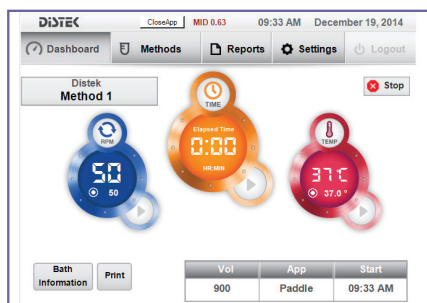
- **WAKE UP AND SLEEP MODE**

Programmable wake up and sleep modes allow the user to schedule thermocirculator start up and shutdown times to save time and conserve energy.

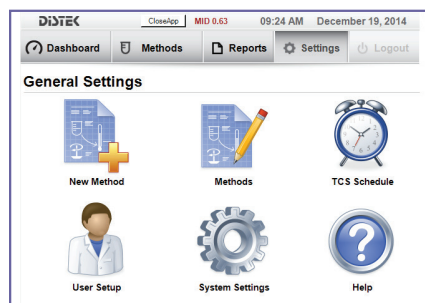


SPECIFICATIONS

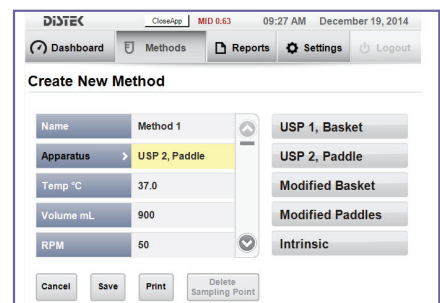
Dissolution Vessels	Six Vessels Standard (7 or 8 Optional)
Volume	25 - 2000 mL (Volumes below 300 mL Require Low Volume Kit)
Water Bath	One Piece Molded Acrylic
RPM Control Range	25 - 300 RPM, Digitally Controlled, Closed Loop
RPM Resolution	0.1 RPM
RPM Accuracy	±1 RPM up to 100 RPM and ±1% >100 RPM
Motor	High Torque, Permanent Magnet
Vessel Temperature Control	Ambient to 55°C, TCS-0500 Thermocirculator
Temperature Resolution	0.01°C
Temperature Accuracy	±0.25°C
Shaft Wobble	Less than 0.010" / 0.254 mm (Total Indicator Runout)
Lab Temperature Min/Max	20°C / 25°C
Lab Humidity Min/Max	20% / 80% Relative Humidity
Display	5.7" Color Touch Screen
User Management	Manage up to 50 Users with Multiple Access Levels
Program Modes	<ul style="list-style-type: none"> • Manual • Automatic (Up to 100 Pre-Programmed Methods) • Distek EVO 4300, Eclipse 5300, Opt-Diss 405, Opt-Diss 410
Interface Ports	USB, Ethernet, RS-232, RS-485
Construction Materials	Cast Aluminum, Stainless Steel, Engineered Plastic
Dimensions	27.5" (w) x 38.5" (h) x 19.5" (d) / (70 cm x 98 cm x 50 cm) TCS: 11.5" (w) x 8.5" (h) x 7" (d) / (29 cm x 22 cm x 18 cm)
Weight	80 lbs. / (36 kg) TCS: 7 lbs. / (3 kg)
Electrical Power	115V ± 15V 50/60 Hz 10A or 230V ± 15V 50/60 Hz 6A (Operating Voltage Pre-Set at Factory) TCS: 115V ± 15V 50/60 Hz 10A or 230V ± 15V 50/60 Hz 7A



Model 2500 - Dashboard Screen



Model 2500 - General Settings Screen



Model 2500 - Create New Method Screen

DISTEK

888.2.DISTEK
 distekinc.com • info@distekinc.com
 121 North Center Drive • North Brunswick, NJ 08902