

# SPE-LV6

---

Compact solid phase extraction system

Make your sample preparation process more reliable and secure

Innovative technology for all applications

---



**Advion Interchim**  
scientific®

# PRESENTATION

Compact solid phase extraction system periods  
Make your analytical process more reliable and secure



The SPE-LV6 is a fully automated positive pressure workstation for sample preparation by SPE solid phase extraction. Specially developed for all analytical chemists looking for performance and alternatives to manual use, the SPE LV6 ensures method development and routine applications are executed with ease. Equipped with an innovative and robust technology, the SPE LV6 saves time and increases productivity thanks to the full automated process. The SPE LV6 uses calibrated tubing to grant high reproducibility and efficiency.

Certified LVD & EMC International Directives / CE / UL / CSA  
Including national differences for EU Group Differences, USA, Canada



Compatible with :

- SPE columns 1 mL, 3mL, 6mL
- FPLC column 1 mL

# APPLICATIONS

- Environmental  
(waters, soils, pesticides...)
- Food & Feed  
(pesticides, drugs...)
- Biological / Toxicology  
(blood, urine, protein & peptide purification...)
- Petrochemical  
(Aromatic hydrocarbon...)



# BENEFITS FOR YOUR SAMPLE PREPARATION

1. Fully automated system ensures time savings for users during sample preparation
2. Guarantees repeatable results
3. Create your purification methods with flexibility & simplicity
4. Improve your sample purification step
5. Automatic rinsing step avoids cross contamination
6. Innovative & robust technology
7. Plug and play in few minutes
8. Easy to use without specific knowledge
9. Cleaner & safer instrument with solvent waste recovery

# SAFER & CLEANER

Keeps a cleaner and safer laboratory with solvent waste recovery  
Automatic solvent waste separations



Aqueous

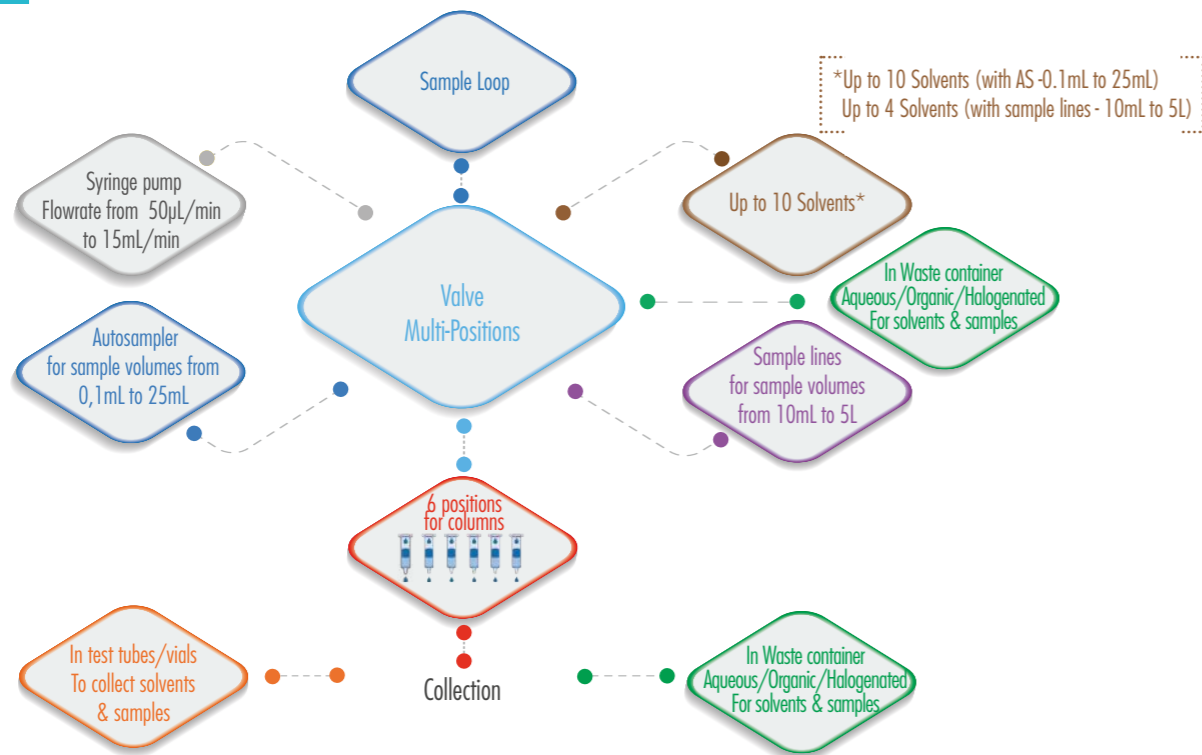


Organic



Halogenated

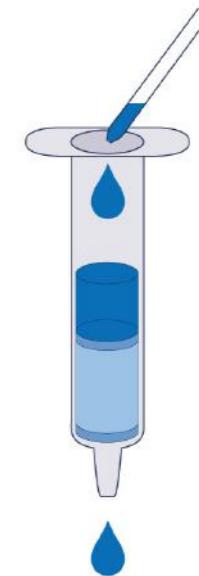




## Efficient & repeatable solvent & sample injections



- Constant flow rate from 50µL/min up to 1.5mL/min
- Increase molecule recovery
- Better separation & retention
- Avoids drying sorbent
- Allows work on resin & ion exchange sorbent



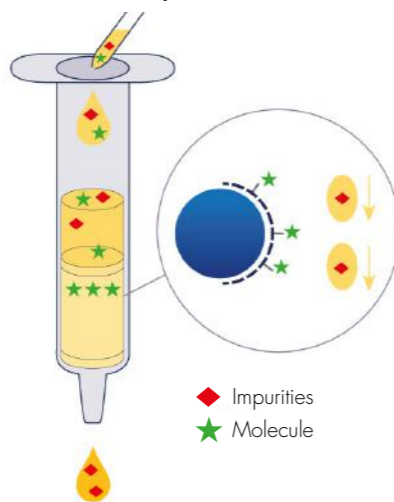
# SAMPLE PURIFICATION METHODOLOGY

Removes impurities  
Analyse molecule of interest



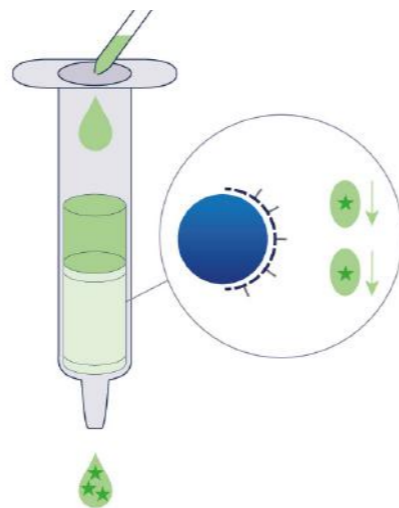
■ Impurities  
◆ Impurities  
★ Molecule

Load & clean your sample  
Isolate your molecule



◆ Impurities  
★ Molecule

Elute your molecule

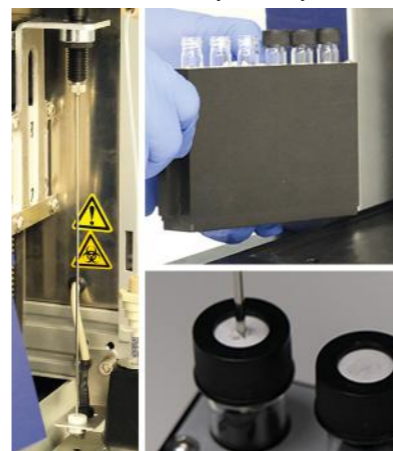


# SAMPLE VOLUME RANGE

For small volume  
From 0,1 mL Up to 25mL



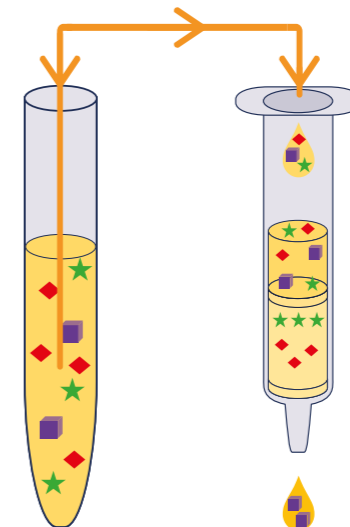
Autosampler  
With sample loop



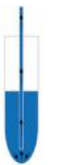

For large volume  
From 10mL Up to 5L



Syringe pump

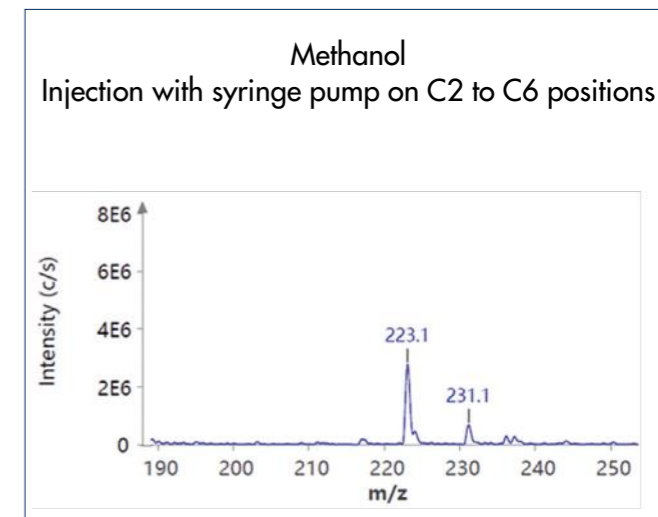
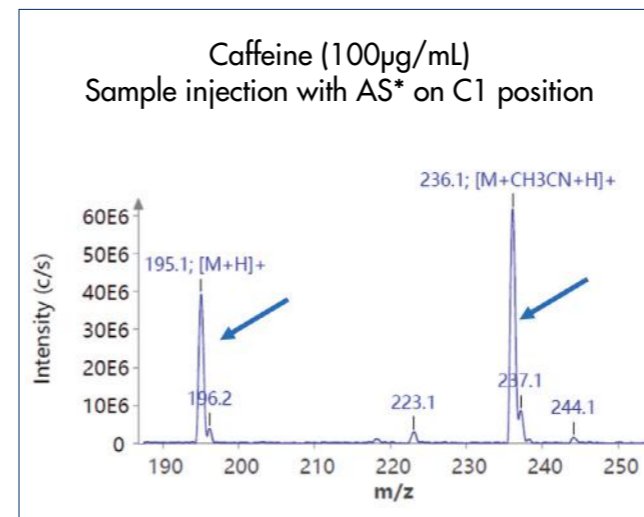


# REPRODUCIBILITY

Injection mode	Autosampler (with needle) + sample loop			Large volume (syringe pump)
Sample volume	1mL	3mL	5mL	50mL
<b>Sampling</b>  <b>RSD (%) Accuracy</b>	<b>0,33</b> 0,991 ± 0,003mL	<b>0,04</b> 2,994 ± 0,001mL	<b>0,04</b> 4,983 ± 0,002mL	X
<b>Collection</b>  <b>RSD (%) Accuracy</b>	<b>0,75</b> 0,96 ± 0,01mL	<b>0,26</b> 2,89 ± 0,01mL	<b>0,19</b> 4,82 ± 0,01mL	<b>0,14</b> 49,67 ± 0,07mL

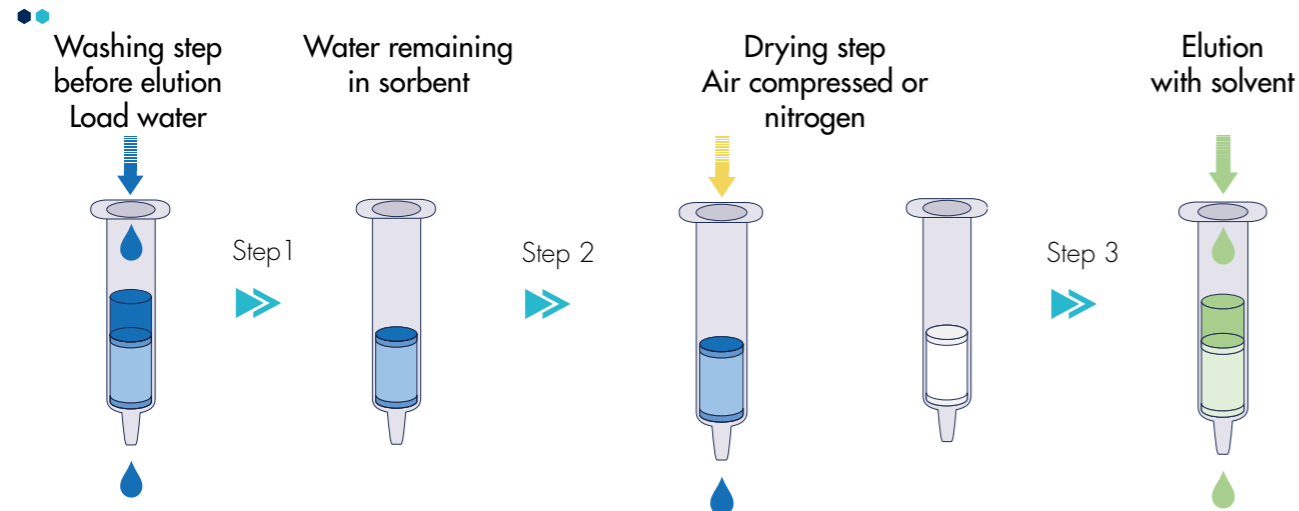
# ZERO CROSS CONTAMINATION

Thanks to automatic rinsing steps and dead-volume control



# REDUCE CONCENTRATION/ EVAPORATION TIME

Drying step efficiency up to 92% in 30 seconds

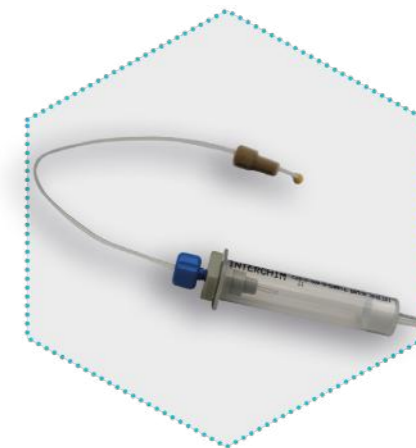
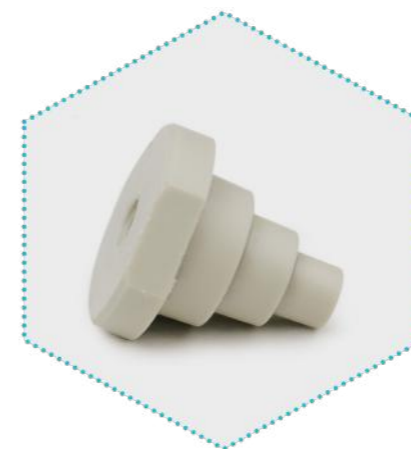


*Drying step takes 15 to 30 minutes with a vacuum manifold*

# ADAPTER

Universal adapters for SPE columns 1mL, 3mL & 6mL  
Creates a perfectly tight seal

••





# INTEGRATED SOFTWARE

- Intuitive software
- 9" touch screen
- Create & Save hundred methods
- Start method in few seconds
- Automated report recording
- Method & data export with USB key
- Offline version to work on a laptop
- Start a run with a mixed column sizes & methods to optimize R&D



# COMPACT FOOTPRINTS

Weight : 25kg



Easy to set up

Installation on a bench or fume hood

No technical requirements for the installation





# INSTRUMENT & ACCESSORIES - PART NUMBERS

Part Number	Description	Qty/Pack
SPE000	Interchim SPE-IV6 Instrument	1
SPE010	Sample Rack 13x100mm, 9mL	1
SPE020	Sample Rack 18x150mm, 25mL	1
SPE030	Collection Rack Vials 12x32mm, 1.8mL	1
SPE040	Collection Rack Vials 12x75mm, 5mL	1
SPE050	Collection Rack Vials 13x100mm, 9mL	1
SPE060	Collection Rack Vials 16x10mm, 11mL	1
SPE070	Collection Rack Vials 18x150mm, 25mL	1
SPE300	Collection Rack Vials 28x140mm, 55mL	1



SPE030



SPE050

# INSTRUMENT & ACCESSORIES - PART NUMBERS

Part Number	Description	Qty/Pack
SPE110	Insert Adapter SPE Columns, 3mL	1
SPE120	Insert Adapter SPE Columns, 1mL	1
SPE510	Insert Adapter FPLC Columns, 1mL	1
SPE520	SPE Columns 1mL - 3mL - 6mL Adapter, PP	1
SPE530	SPE Columns 1mL - 3mL - 6mL Adapter, PEEK	1
SPE540	Tubing 23cm Kit for Adapter & FPLC Column	1
468452	Universal PEEK Uptisur fitting 1/16"	1



SPE110



468452



SPE520



SPE540

# CANISTERS & GLASSWARES - PART NUMBERS

Part Number	Description	Qty/Pack
<b>CLEAR GLASS BOTTLES</b>		
B689C0	Bottle GL45, 100mL Clear Glass Duran Graduated with screw Cap and Pouring Ring PP	10
B689C1	Bottle GL45, 100mL Clear Glass Duran Graduated with screw Cap and Pouring Ring PP	1
B689E0	Bottle GL45, 150mL Clear Glass Duran Graduated with screw Cap and Pouring Ring PP	10
B689E1	Bottle GL45, 150mL Clear Glass Duran Graduated with screw Cap and Pouring Ring PP	1
BV2762	Bottle GL45, 250mL Clear Glass Duran Round	10
BV2761	Bottle GL45, 250mL Clear Glass Duran Round	1
HP6192	Bottle GL45, 500mL Clear Glass Duran Round	10
HP6191	Bottle GL45, 500mL Clear Glass Duran Round	1
B4PQA1	Bottle GL45, 3500mL Clear Glass Duran Round	1
HP6165	Bottle GL45, 1L Clear Glass Duran Round	1
HP6201	Bottle GL45, 2L Clear Glass Duran Round	1
B4PQA1	Bottle GL45, 3500mL Clear Glass Duran Round	1
JJ6915	Bottle GL45, 5L Clear Glass Duran Round	1
JM5535	Bottle GL45, 10L Clear Glass Duran Round	1
B689V0	Bottle GL45, 15L Clear Glass Duran Graduated with screw Cap and Pouring Ring PP	1
B689X0	Bottle GL45, 20L Clear Glass Duran Graduated with screw Cap and Pouring Ring PP	1
<b>CANISTER PE-HD</b>		
	Interchim SPE-IV6, Canister PE-HD S60/61, 5L	1
	Interchim SPE-IV6, Canister PE-HD S60/61, 12L	1
	Interchim SPE-IV6, Canister PE-HD S60/61, 20L	1
	Interchim SPE-IV6, Canister PE-HD S60/61, 30L	1



# TEST TUBES - PART NUMBERS

Part Number	Description	Qty/Pack
<b>TEST TUBES &amp; CAPS</b>		
AXETN5	Test Tubes, 12,00x75mm Borosilicate Glass EXP51, 6mL Without RIM - Round Bottom - 0,5-0,6mm	4 x 250
AXETO5	Test Tubes, 13,00x100mm Borosilicate Glass EXP51, 10mL Without RIM - Round Bottom - 0,5-0,6mm	4 x 250
AXETP5	Test Tubes, 16,00x100mm Borosilicate Glass EXP51, 5mL Without RIM - Round Bottom - 0,5-0,6mm	4 x 250
AXETT5	Test Tubes, 18,00x150mm Borosilicate Glass EXP51, 28,5mL Without RIM - Round Bottom - 0.8mm	2 x 250
341651	10mL Screw Vials, 13mm Iear Glass 13x100mm Rounded Bottom (For Sample Rack SPE010)	1 x 125
BF2240	13mm Screw Caps White Silicone/REDPTFE 1.5mm - Cross Slit (For Sample Rack SPE010 & Test Tubes 341652)	1 x 100
ARX3CO	Culture Tubes, 13,00x100mm Borosilicate Glass EXP51, 10mL 13-415 - Round Bottom - 0.9mm	4 x 250



BF2240



AXETO5

ARX3LO



# Advion Interchim

scientific®

## How to request more information, a quotation or to place an order

Please see from the list below:



### E-mail

---

info.EU@advion-interchim.com  
quotes.EU@advion-interchim.com  
orders.EU@advion-interchim.com

### Online

---

[www.advion-interchim.com](http://www.advion-interchim.com)

### Phone

---

+33 4 70 03 88 55

**All your orders will be recorded  
& processed as quickly as possible.**

---

**You need technical assistance?  
Our scientific experts are here to help.**

[instrumentation@advion-interchim.com](mailto:instrumentation@advion-interchim.com)

*Advion Interchim Scientific is the market-facing name of a partnership between Advion, Inc. and Interchim SAS, separate companies that have agreed to market and distribute their products together. All registered and trademark belong to their respective owners. Non-contractual pictures.*