

Automate SPE-LV6 Workstation

Make your sample preparation process more reliable and secure



Our manufacturing



Applications



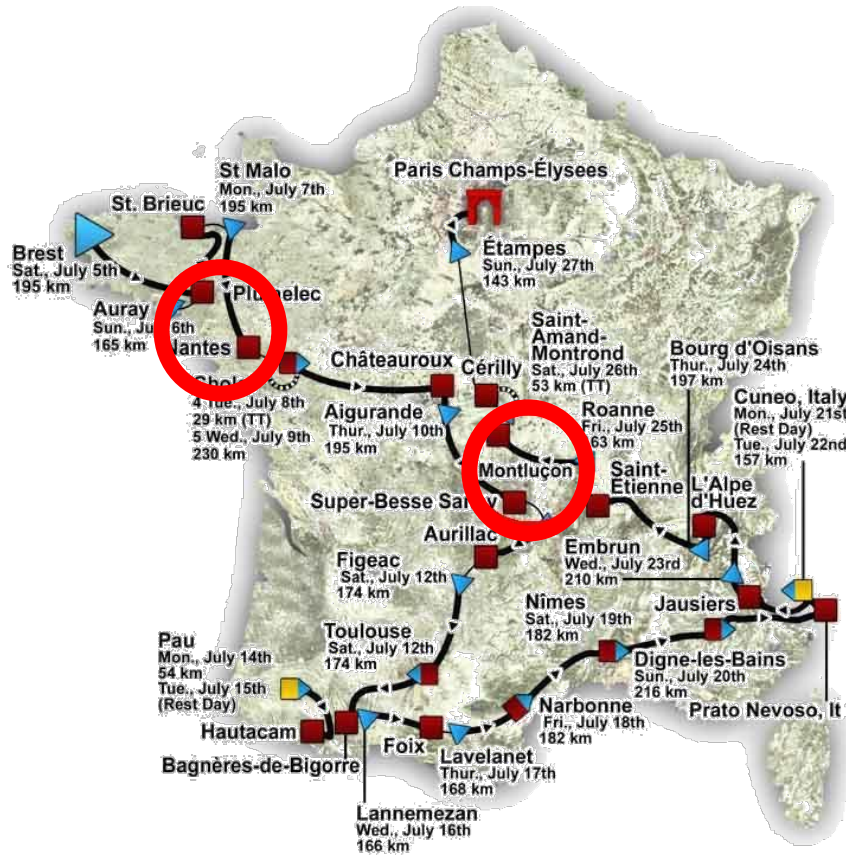
Discover
Our Innovative Technology



Click on pictures 



Since 1970...



- Sales & Administration

11,000 sq. ft.

+ 110 employees ; 4500 customers ; 100,000 Worldwide end users

Web site : 20,000 visits/month

250 technical questions/day

- Warehouse & Distribution

25,000 sq. ft.

200 to 300 parcel a day

- Consumables Manufacturing

R&D Laboratories + Production

17,000 sq. ft.

Scientific team of PhD, MS, Technicians Part time with University + University research programs

- Instruments Manufacturing

10,000 sq. ft.

located in Saint Victor

- Instruments R&D

5,500 sq. ft.

located in Vannes



SPE-LV6 Certified to international standards

Date: 2023 April, 4th

Designated equipment: Solid Phase Extraction (SPE). The "SPE LV6" designed for simple. Automation of manual solid phase extraction (SPE) methods.

Name: SPE LV6

CB Certificate N°: DE 2-038464

We Interchim Declare that the product complies with the following directives, standards, and other normative documents.

2014/35/EN - Low Voltage Directive (LVD)

Standards used:

- IEC 61010 -1: 2010+A1
- IEC 61010 - 2 - 081: 2019

2014/30/EU Electromagnetic Compatibility Directive

Standards used:

- EN 61326-1 :2013
- EN 61000-3-2 :2014
- EN 61000-3-3 :2013+A1 :2019

Including national differences for **EU Group Differences, USA, Canada.**

Low Voltage Directive (LVD)

IEC 61010-1:2010 + A1: 2016

IEC 61010-2-081:2019

EN 61010-1:2010+A1 :2019

UL 61010-1:2012 R7.19

UL 61010-2-081:2019

CAN/CSA C22.2 No61010-1-12+G11+G12 (2017) +A1

CAN/CSA C22.2 No 61010-2-081:19

Electromagnetic compatibility (EMC)

EN 61326-1:2013

EN 61000-3-2:2014

EN 61000-3-3:2013+A1:2019

47 CFR FCC Part 15 B, Class A



		Ref. Certif. No. DE 2-038464
IEC SYSTEM FOR MUTUAL RECOGNITION OF TEST CERTIFICATES FOR ELECTRICAL EQUIPMENT (IECEE) CB SCHEME		
CB TEST CERTIFICATE		
Product	Solid Phase Extraction (SPE)	
Name and address of the applicant	INTERCHIM INSTRUMENTS SAS 2A Route "Al de Chet" - Pont des Hautes 6 rue du Commerce, 02410 SALZP VICTOR, France	
Name and address of the manufacturer	INTERCHIM INSTRUMENTS SAS 2A Route "Al de Chet" - Pont des Hautes 6 rue du Commerce, 02410 SALZP VICTOR, France	
Name and address of the factory	INTERCHIM INSTRUMENTS SAS 2A Route "Al de Chet" - Pont des Hautes 6 rue du Commerce, 02410 SALZP VICTOR, France	
Ratings and principal characteristics	100-240 Vac, 50-60 Hz, 150 W	
Trademark (if any)	INTERCHIM	
Customer's Testing Facility (CTF) Stage used Model / Type Ref.	CTF Stage 1 SPE LV6	
Additional information (if necessary may also be reported on page 2)	-	
A sample of the product was tested and found to be in conformity with	IEC 61010-1:2010+A1 IEC 61010-2-081:2019 for national differences see test report	
As shown in the Test Report Ref. No. which forms part of this Certificate	DE220407 001	
This CB Test Certificate is issued by the National Certification Body		
	TÜV Rheinland IGA Produkte GmbH Zillgraben 2, 50469 Bonn, Germany Phone: +49 221 506-177 Fax: +49 221 506-2028 Email: cert@tuev.com Web: www.tuv.com	<i>Martin Vidua</i>
Date: 2023-01-24	Signature:	Martin M. Vidua

Click to return
Menu



Environment

waters, soils, pesticides



Petrochemical

Aromatic hydrocarbon

Biological

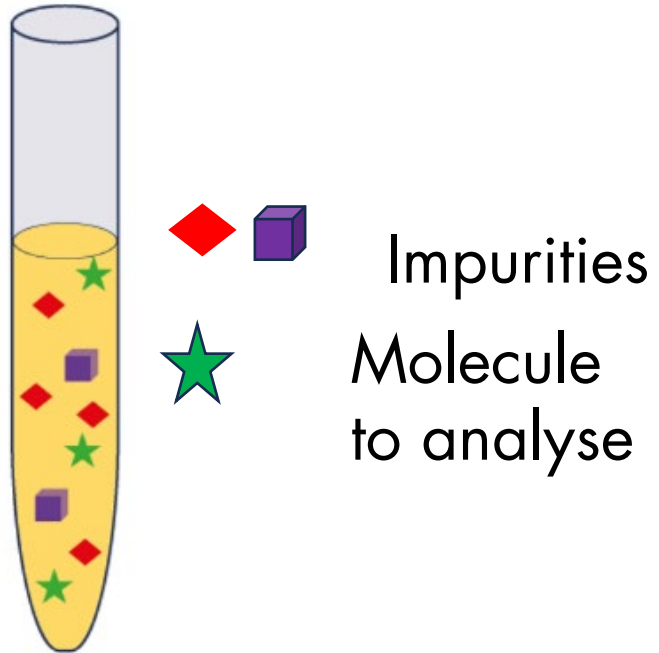
blood, urine,
protein & peptide purification

Food & Feed

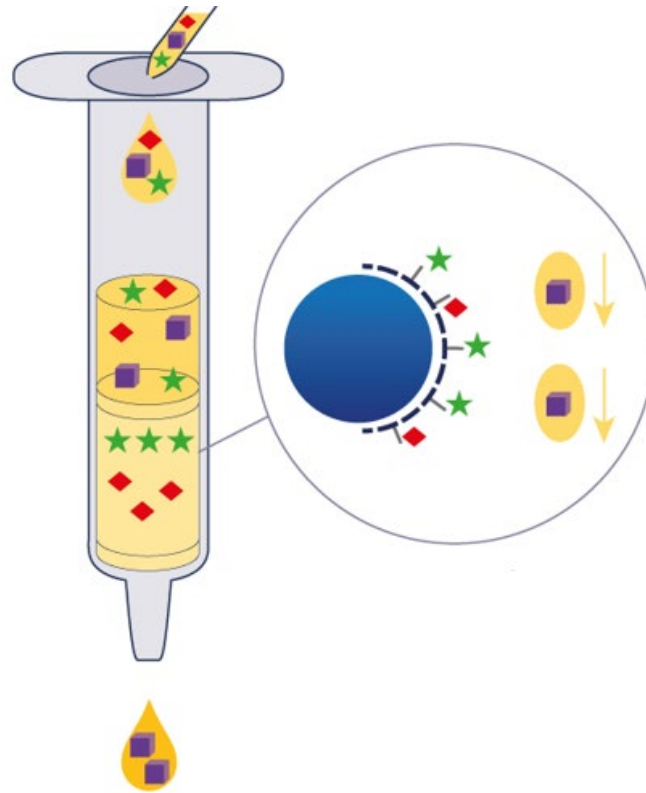
pesticides, drugs



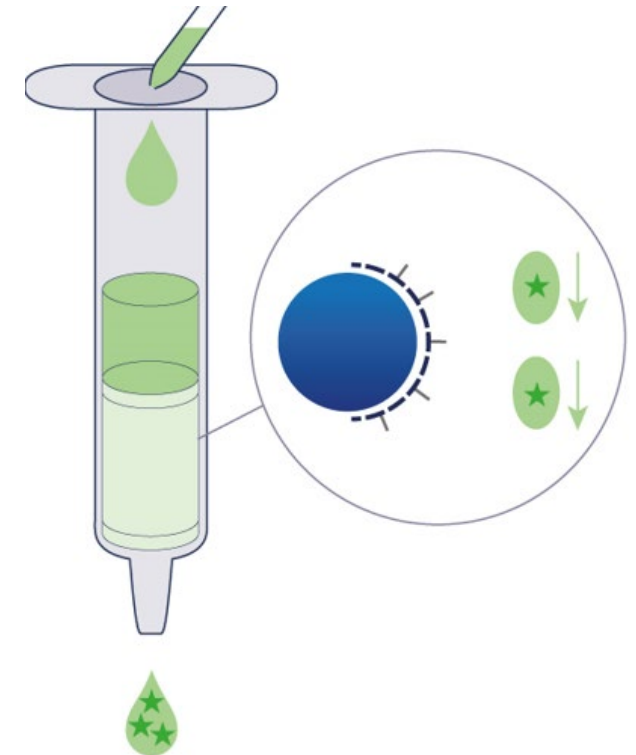
Remove impurities
Analyse Molecule of Interest



Load & clean your sample
Isolate your molecule



Elute your molecule



Automate SPE LV6



SPE columns



+> 30 Sorbents
Spherical silica
Polymer modified
PSDVB

Consumables



Glass test
tubes



Vials



Bottles

Evaporation

Gas blowdown

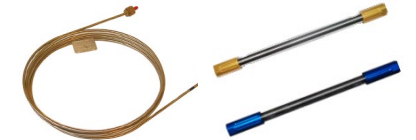


Rotary Evaporator



LC/GC analysis

Columns



Instruments
Detection



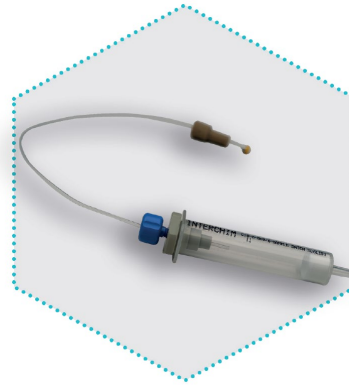
Click to return
Menu



Technology



Accessories



User Experience



Click on pictures 

Click to return
Menu

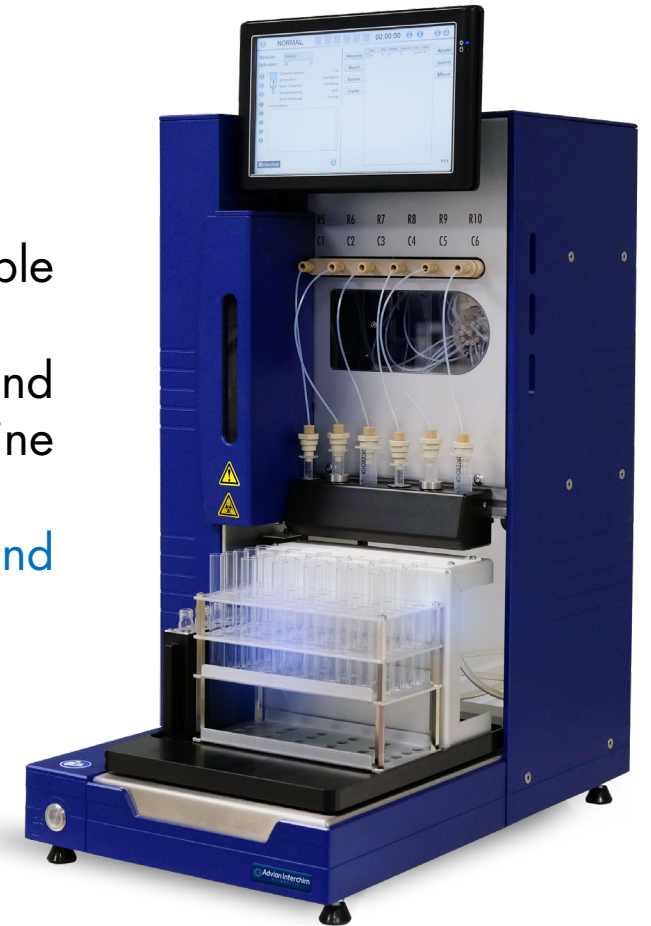


Compact solid phase extraction system Make your analytical process more reliable and secure

The SPE-LV6 is a **fully automated positive pressure** workstation for sample preparation by SPE solid phase extraction.

Specially developed for all analytical chemists looking for performance and alternatives to manual use, the SPE LV6 ensures method development and routine applications are executed with ease.

Equipped with an innovative and robust technology, the SPE LV6 **saves time and increases productivity thanks to the full automated process.**



1. **Full Automated System** ensures **Time Saving for Users** during Sample Preparation
2. Guarantees **Repeatable Results with Positive Pressure Technology**
3. Create your Purification Methods with **Flexibility & Simplicity**
4. **Improve your Sample Purification Step**
5. **Automatic Rinsing Step** avoids **Cross Contaminations**
6. **Innovative & Robust Technology**
7. **Plug and Play** in Few Minutes
8. **Easy to Use** without specific knowledges
9. **Cleaner & Safer** Instrument with **Solvent Waste Recoveries**



From **0,1 mL**
(urine, blood...)



up to **5L**
(water..)



1 mL, 3 mL, 6 mL SPE columns



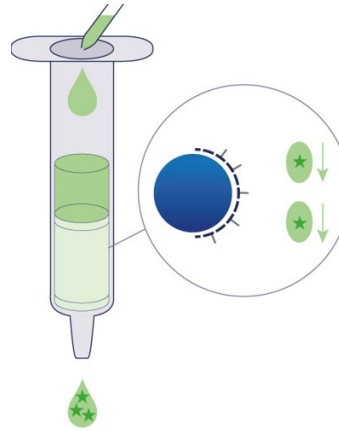
1 mL FPLC columns



Sample to purify



Sample purified



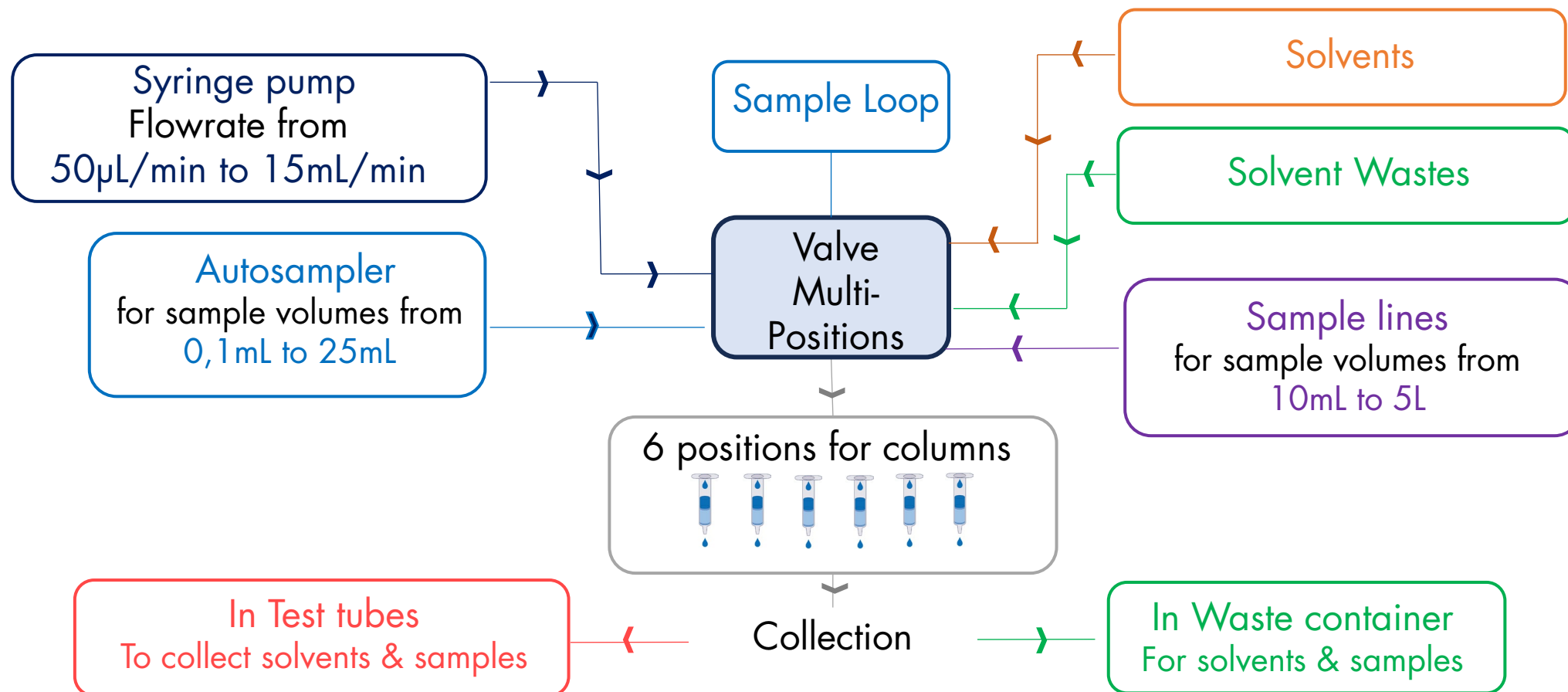
Concentration elution



Analysis



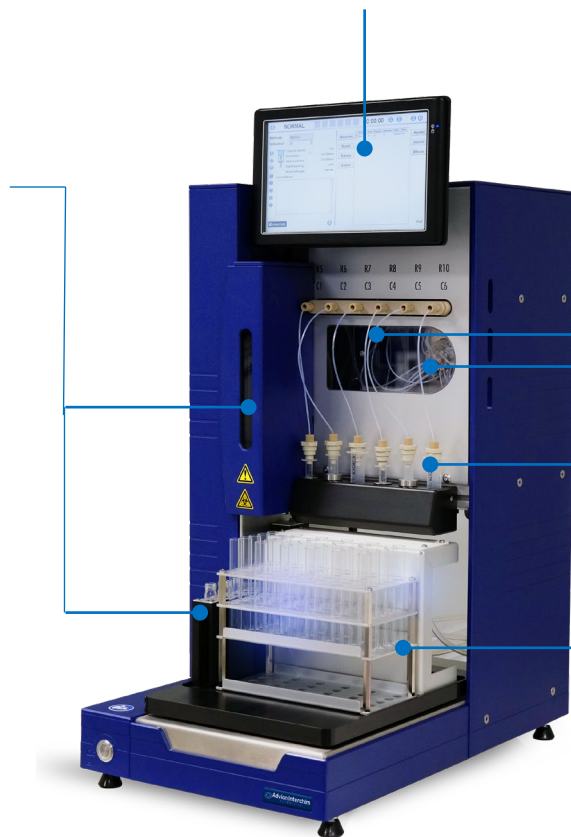
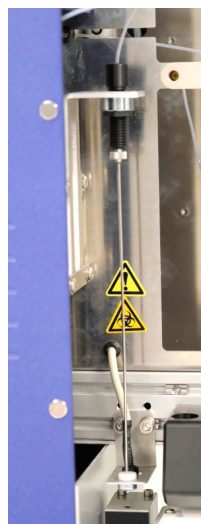
All the Fluidic tubings are Calibrated Dead-volumes Controlled -> Greatest Purification Results



Intuitive Software Touch Screen Panel 9"

Autosampler integrated

Sample vol. from 0,1 mL to 25mL
Tube : 13x100 -18x150mm
Sample loop calibrated

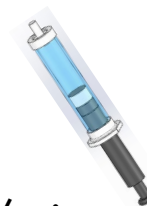


Syringe pump

Solvents Injection

Sample vol. from 10mL to 5L

Flowrate : 0,50 μ L/min up to 15mL/min



Valve 20 pos.

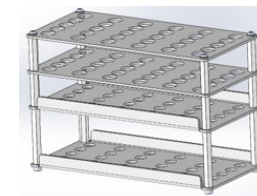
SPE & FPLC Columns - 6 positions

Collection rack

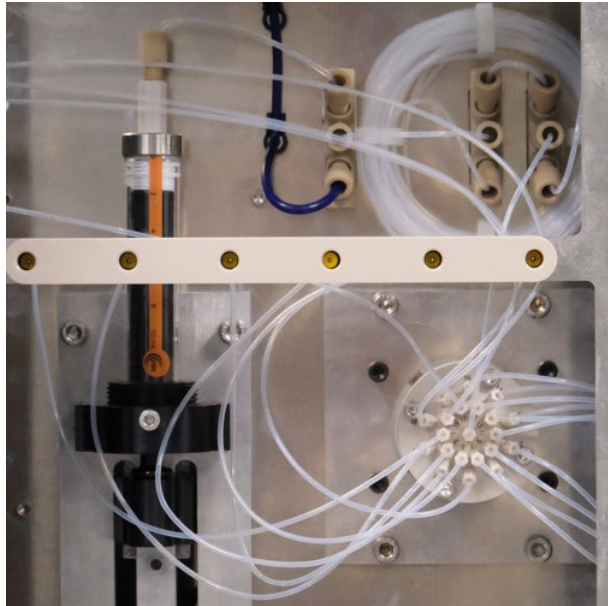
Vials & Test tubes

From 2mL up to 60mL

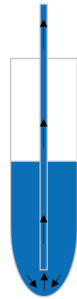
Up to 5 collections per column



Calibrated Tubings for Dead-volume Control

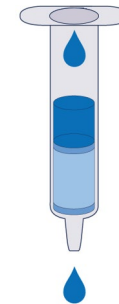


Autosampler (needle sampling)



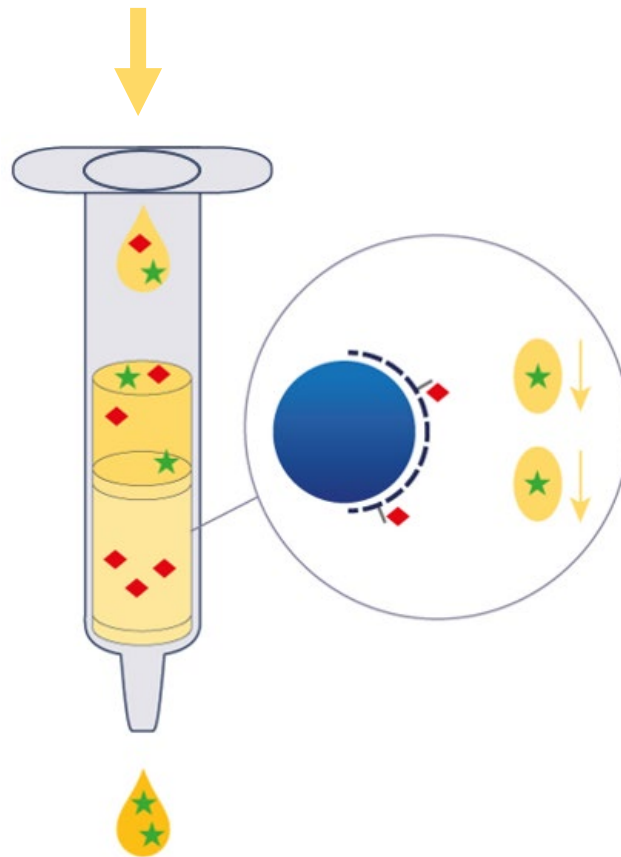
RSD up to 0,04

Solvent & sample column loading



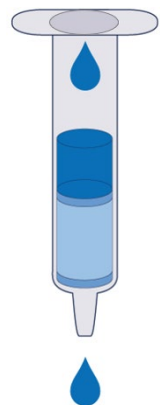
RSD up to 0,14

Our Technology provides an **Efficient & Repeatable Injection Flowrates of Solvents & Samples**



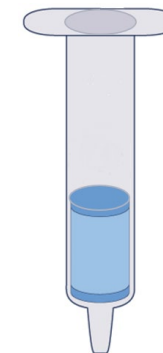
Our Technology

Constant Flow rate
Solvent/Sample Volumes
(in mL/min)



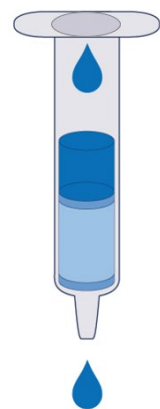
Solvent & Sample remain in Sorbent

- Increase Molecule Recovery
- Better Separation & Retention
- Avoid drying sorbent
- Allow to work on resin & ion exchange



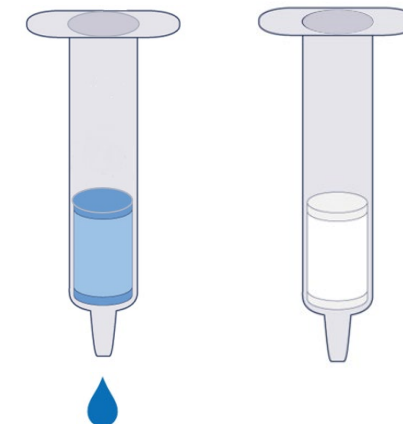
Other Technology

Load
Solvent/Sample Volumes
(in mL/min)

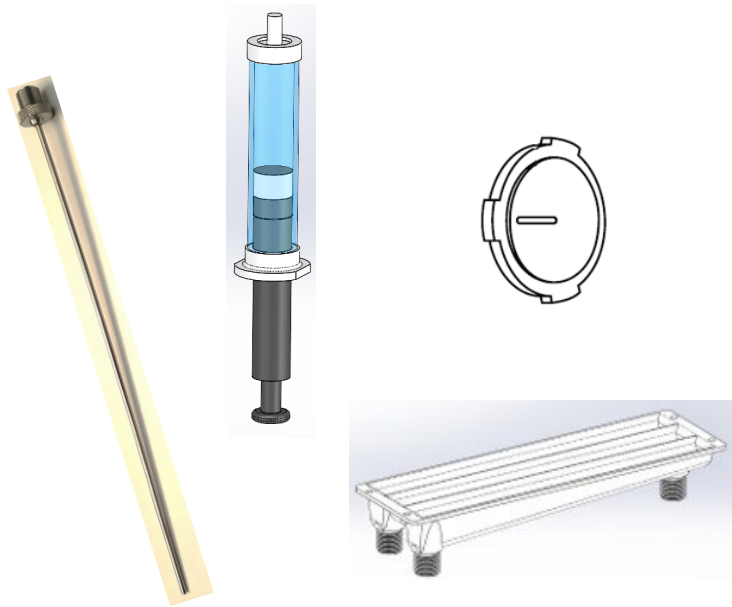


Air gas or vacuum suction push the solvent/sample threw the sorbent

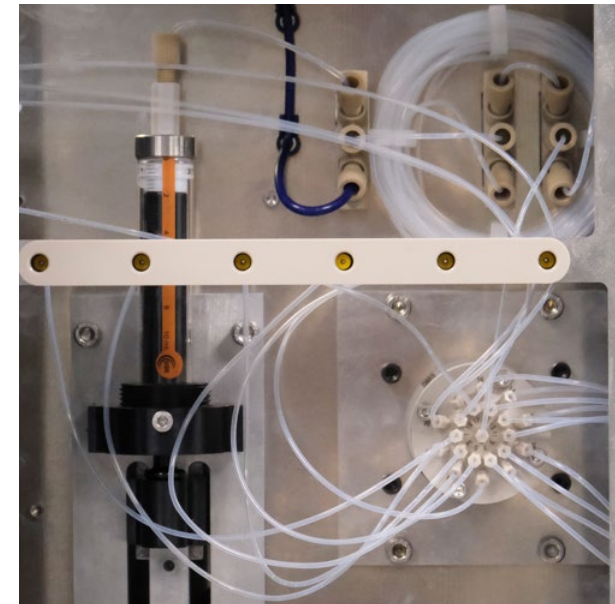
- Unstable flow rate
- Risk to dry the sorbent causes lower molecules retentions & recoveries



Preventive Maintenance
Costs < ~4% SPE-LV6 Prices



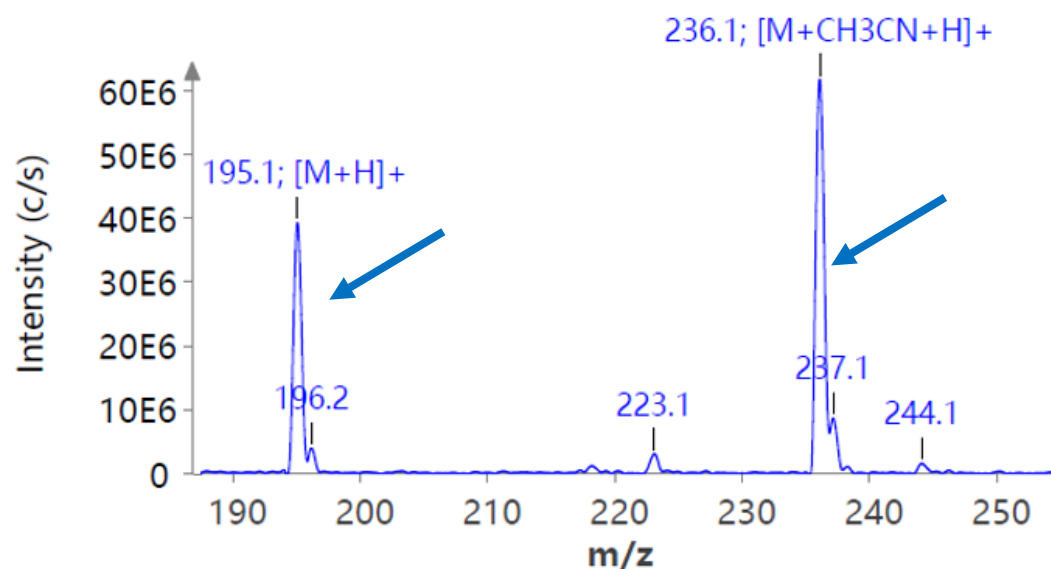
Inert Material
PEEK, ETFE, SS 316L,
PTFE free for PFAS analysis



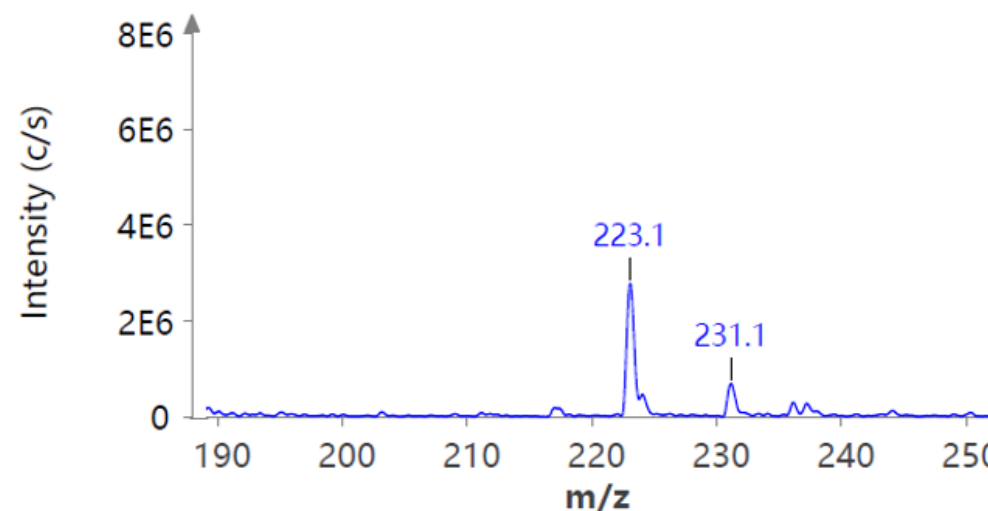
* : catalog price

No Cross Contamination between Each Positions
Thanks to Automatic Rinsing Step of Valve & Internal tubings

Caffeine (100µg/mL)
Sample injection with AS* on C1 position



Methanol
Injection with Syringe pump on C2 to C6 positions

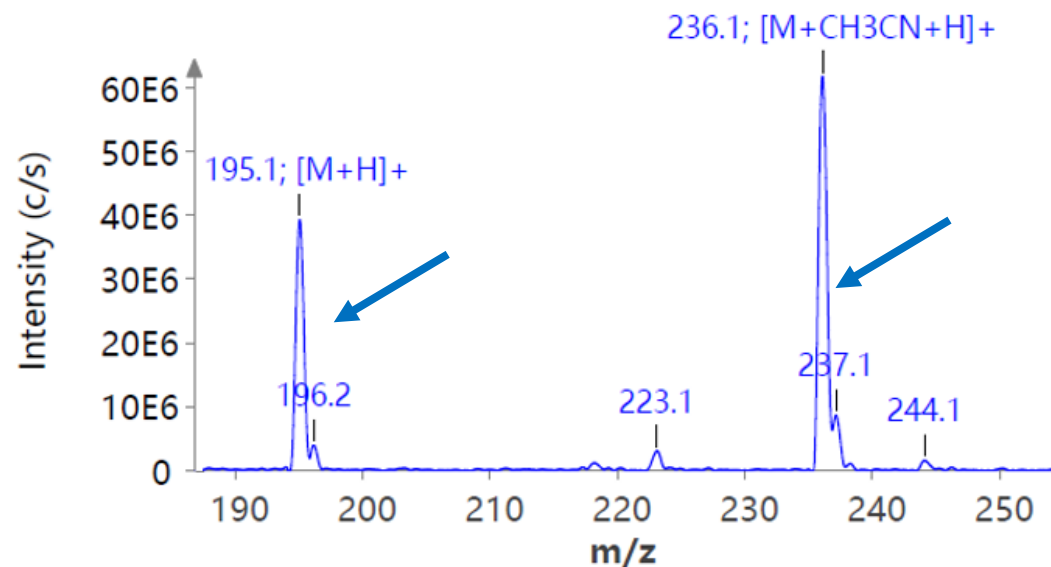


* : AutoSampler with needle & loop

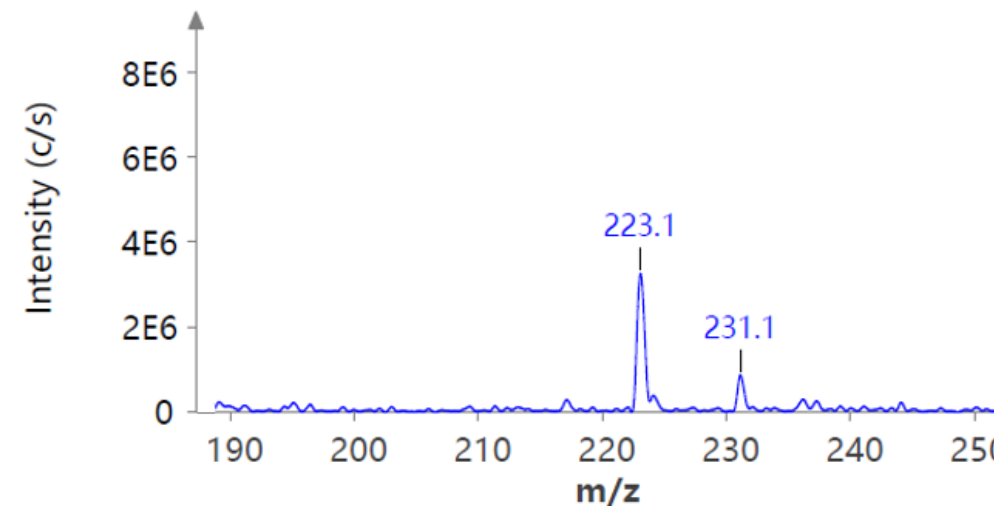


No Cross Contamination of Autosampler Needle between Each Sample Batches
Thanks to Automatic Rinsing Step of Needle

Caffeine (100 μ g/mL)
Sample injection with AS* on C1 position



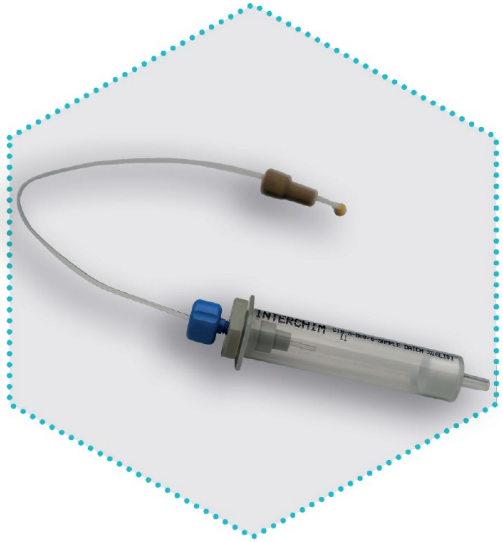
Methanol
Solvent injection with AS* on C1 position
after injection of Caffeine



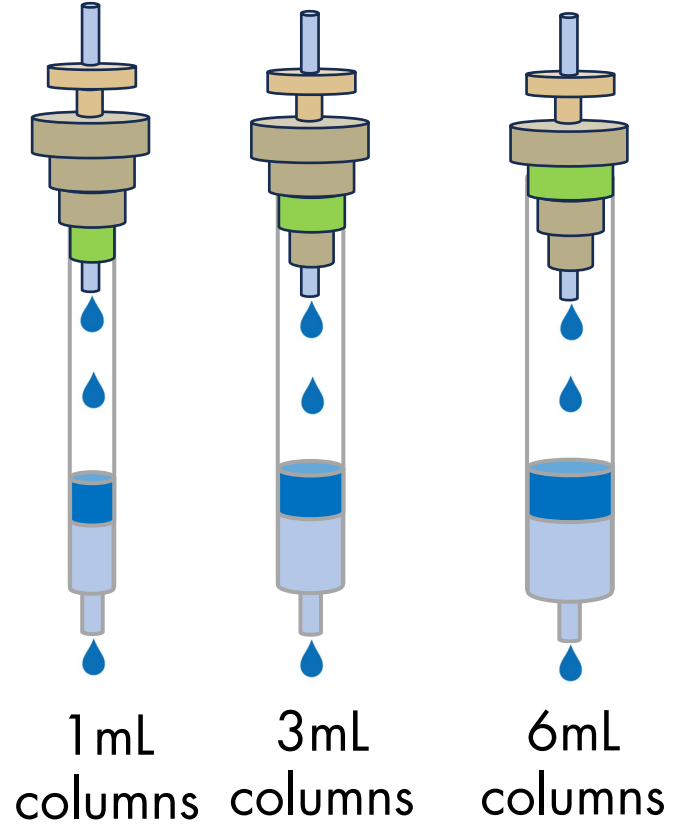
* : AutoSampler with needle & loop



Universal Column Adapters for SPE & FPLC columns



Perfect tightness 



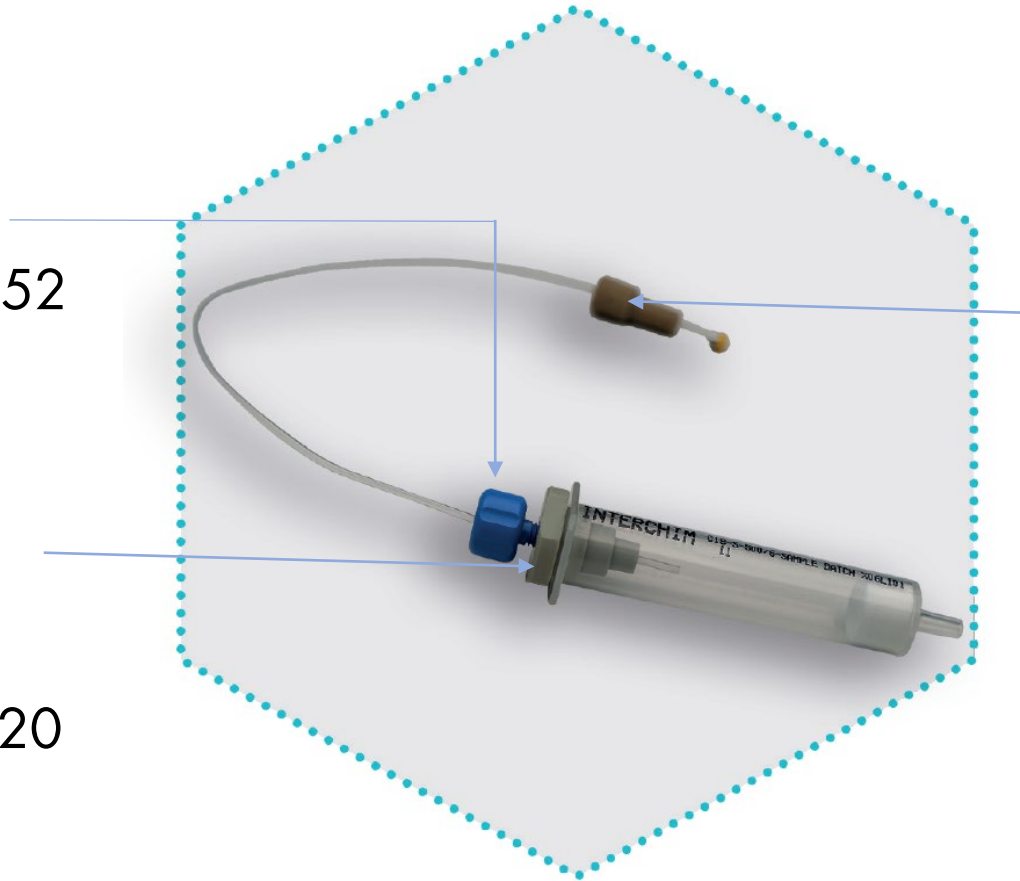
Universal Column Adapters for SPE columns



p/n : 468452



p/n : SPE520



p/n : SPE540



p/n : SPE540

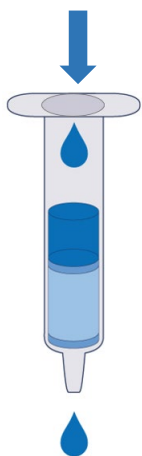


p/n : 468452



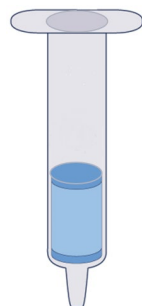
%Water in Elution Fraction **reduced up to 92% in 30seconds**
Save Time for Concentration/Evaporation Step
(vs SPE Vacuum Manifold - Drying Column Step Time > 30minutes)

Washing step before elution
Load Water



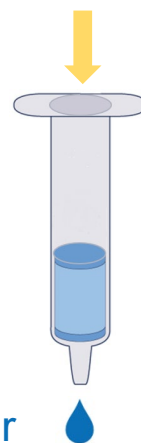
Step 1
➡➡

Water remaining
in sorbent

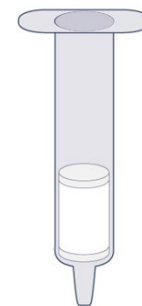


Step 2
➡➡

Drying step
Air compressed or Nitrogen

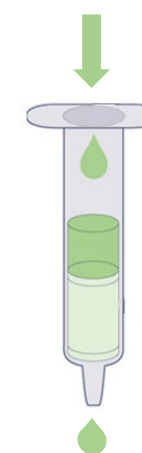


Water



Step 3
➡➡

Elution
With solvent

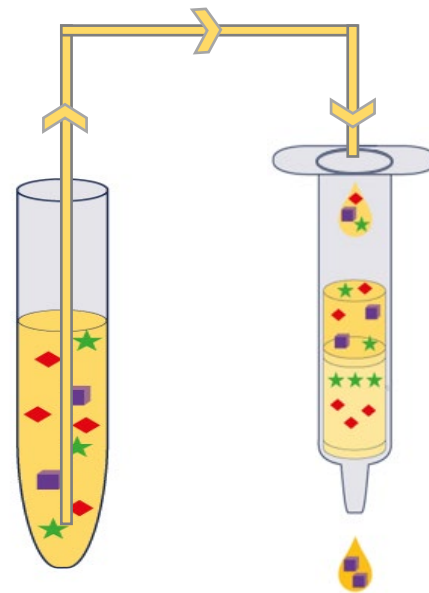
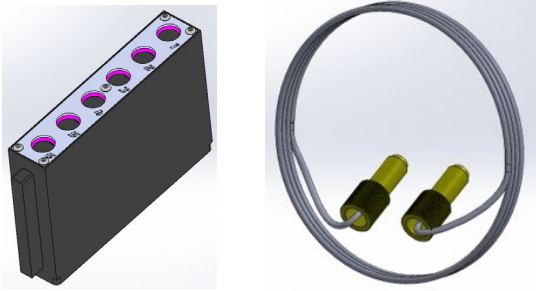


Low water concentration in
solvent after drying step

Two choices to Inject your Samples With a **Single** Automate SPE LV6

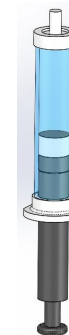
For **Small Volume**
From 0,1 mL Up to 25mL

Autosampler
With sample loop



For **Large Volume**
From 10mL Up to 5L

Syringe Pump



Up to 10 Solvents Create your Methods with Flexibility

Autosampler Mode
(sample from 0,1 mL to 25mL)

> Up to 10 solvents
(lines R1 to R10*)

* : R = Reagent



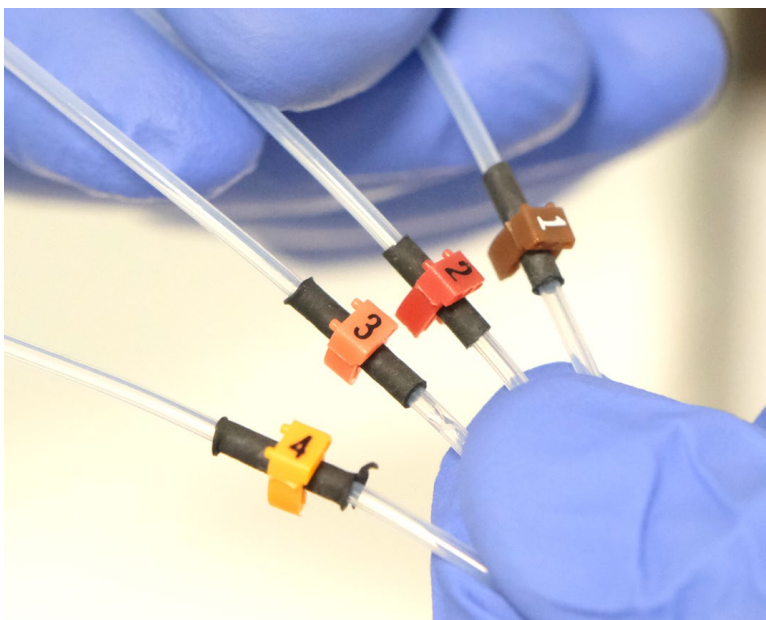
Large Volume Mode
(sample from 10mL to 5L)

> Up to 4 solvents
(lines R1* to R4*)

Using lines R5 to R10 for samples

Each lines are identified by a Number

Lines R1 to R4
(for solvents)



Lines R5 to R10
(for solvents or samples)

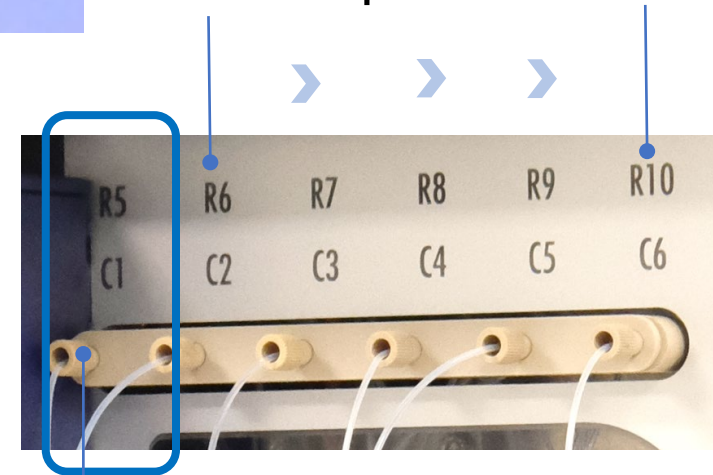


« **S** » : Sample

« **1** » : Sample n°

« **5** » : Line R5

S2->R6 up to S6->R10



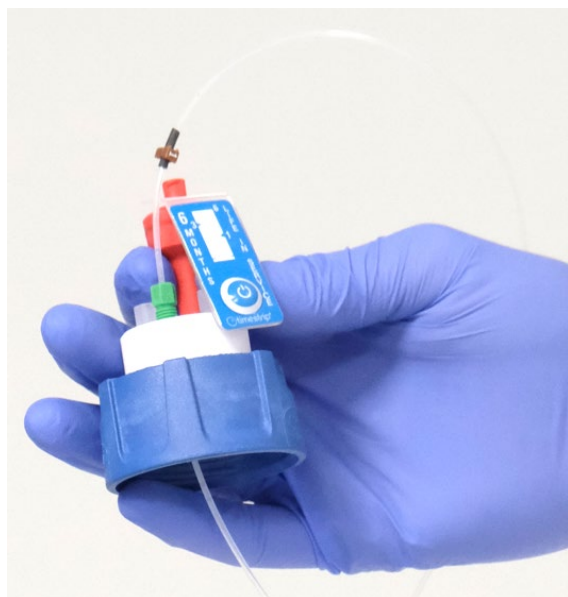
Sample loaded on column 1

Filters



Safety Caps

(blocks harmful vapours for your safety)



Clips



Bottles



Keep a **Cleaner & Safer** Laboratory with **Solvent Waste Recovery**

SPE LV6 **manages automatically** your wastes thanks to our control software

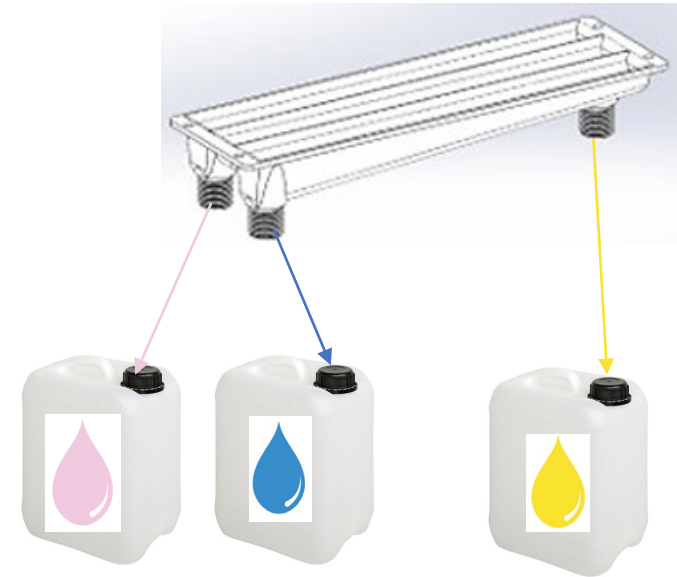
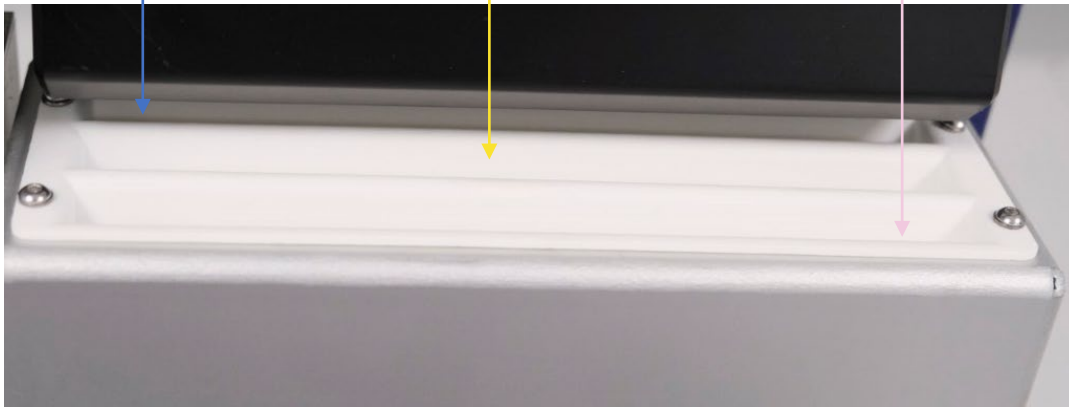
Aqueous



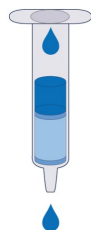
Organic



Halogenated



Condition Step



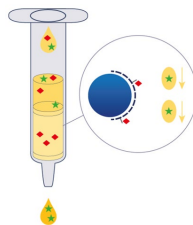
Large volume mode

Wastes
WO, WA, WH

Autosampler mode

Wastes
WO, WA, WH

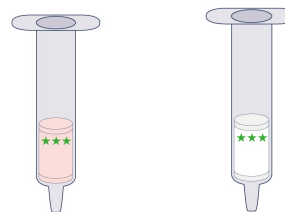
Sample loading Step



Wastes
WO, WA, WH

Wastes
WO, WA, WH
Or in collection tube

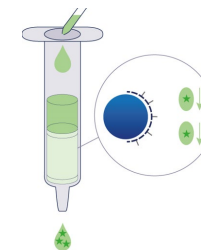
Washing/Drying Steps



Wastes
WO, WA, WH
Or in collection tube

Wastes
WO, WA, WH
Or in collection tube

Elution Step



In collection tube
By default

In collection tube
By default

WO = waste organic ; WA = waste aqueous ; WH = waste halogenated

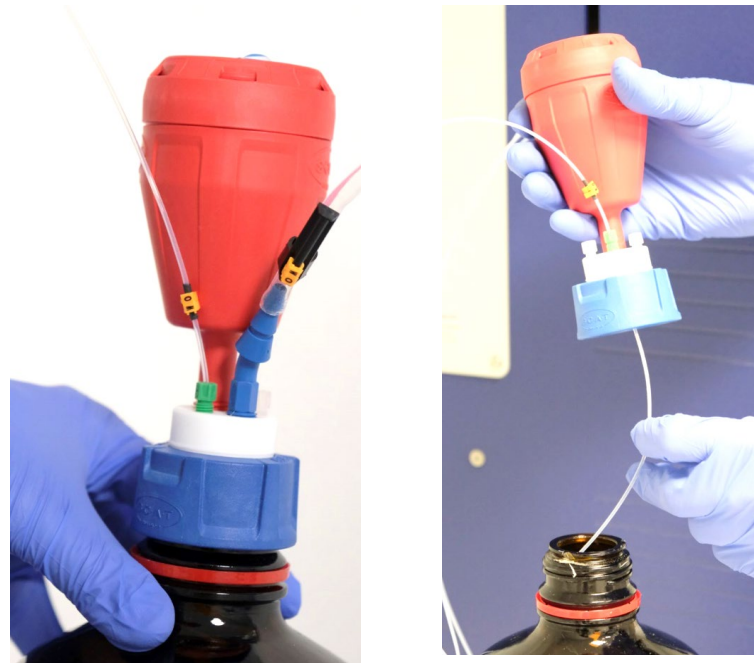


Clips



Safety Caps

(blocks harmful vapours for your safety)



Bottles - Canisters



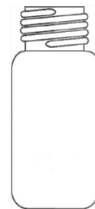


Test tubes

- 12x75mm
- 13x100mm
- 16x100mm
- 18x150mm

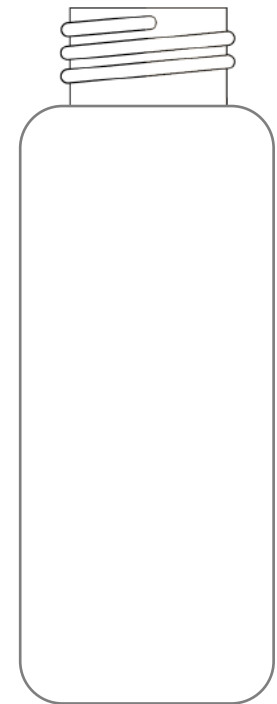
Vials 2mL

12x32mm



Vials 60mL

28x140mm

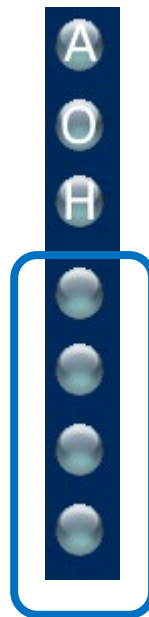


Up to **2 collections**
per column



-> Vials 28x150mm

Up to **4 collections**
per column



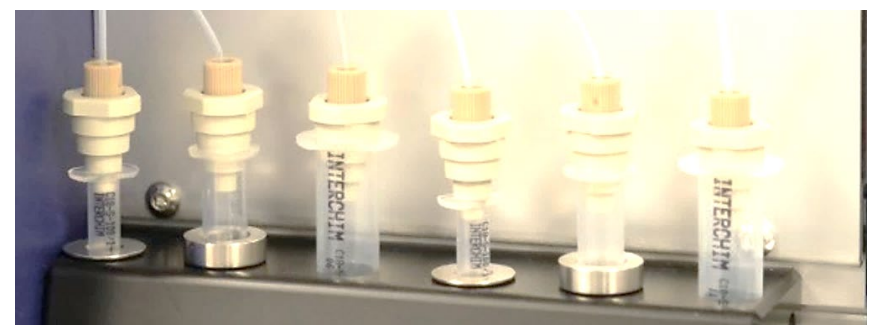
-> Test tubes 16x100mm
-> Test tubes 18x150mm





Up to **5 collections**
per column



-> Vials 2mL
-> Test tubes 12x75mm
-> Test tubes 13x100mm

- Touch screen 9"
- Create & Save Hundred Methods
- Start Method in Few Seconds
- Method & Data Export with USB Key
- Offline version to work on a laptop
- Automatic data report saving
- Start a Run with a mixing Column Sizes & Methods to optimize R&D



1 2 3 4 5 6 00:00:00    



Step	Way	Volume	Flowrate	Tube	Wait
Condition	R2	2	15	Waste	0
		2	15	Waste	0
		50	15	Waste	0
		5	5	Current	0
		0.05	0.05	Current	30
		4	4	Next	0
		0	0	Current	10

Start Mode

Normal
 Delayed min

Forecasting Method:

Estimation: 1:49:45
R1 = 63.900 ml
R2 = 57.900 ml
R5 = 54.5 ml

Add
Insert
Delete

Before to start your methods, the software gives :

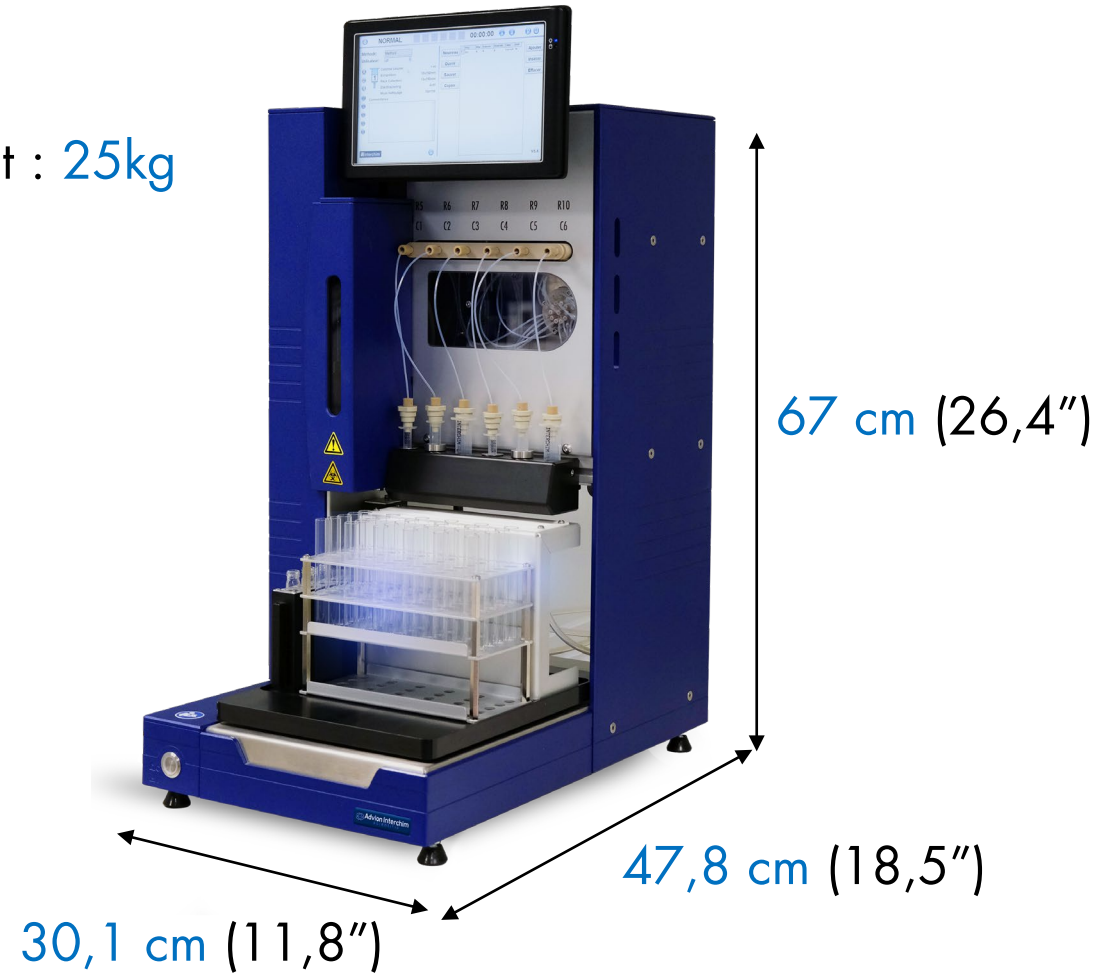
- Solvent Quantities
- Total Time

The instrument can be launched with a delayed time (example : purification of samples during the night and your samples will be purified at your arrival in the morning -> increase samples throughput per day)

Weight : 25kg

SPE-LV6 location in Lab

- On a Lab Bench
- Under a Lab fume hood



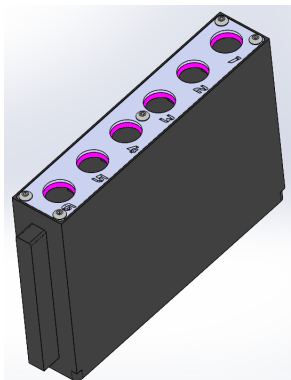
AIS Team are here to help you Installation & Technical Supports to use the SPE-LV6

Our AIS Service Teams can
install and check your system in
your lab
+
Technical Training for Users

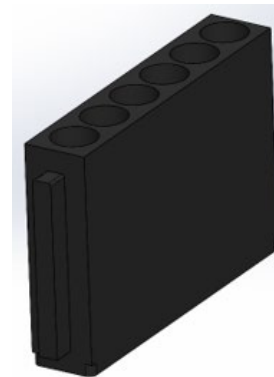


Contact our Technical Support
To help you and answer to your
questions
(video conference, email,
phone)





P/n : [SPE010](#)
SAMPLE RACK_13x100MM_9ML

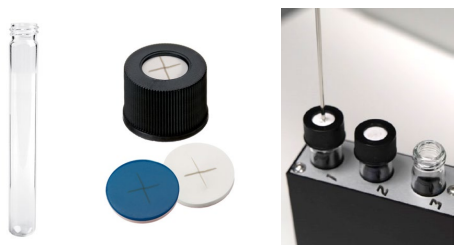


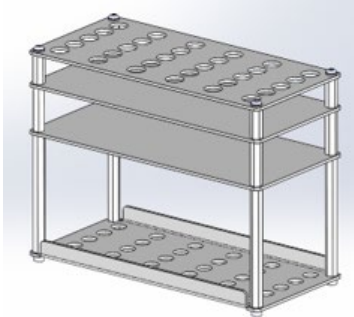
P/n : [SPE020](#)
SAMPLE RACK_18x150MM_25ML

P/n Test tubes : [ARX3CO](#) (4x250u)
P/n Caps : [BF2240](#) (1x1000u)

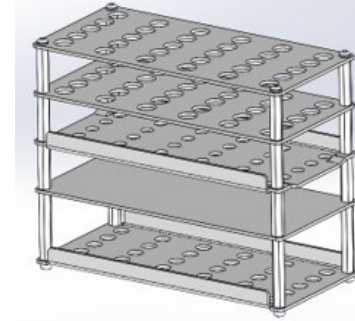
P/n Test tubes : [AXETO5](#) (4x250u)
P/n Caps : [B6AWD0](#) (1x1000u)

P/n Test tubes : [AXETT5](#) (4x125u)
P/n Caps : [B6AWF0](#) (1x1000u)

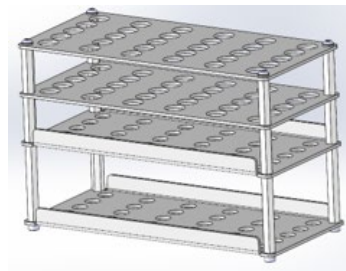




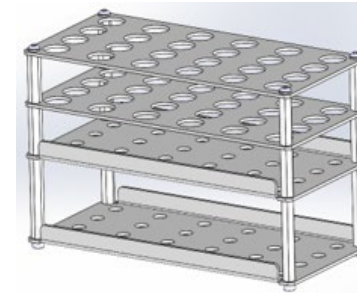
P/n Rack : [SPE030](#)
COLLECTION RACK_VIALS 12X32MM_1.8ML
P/n Vials : [ask our service \(different models\)](#)



P/n Rack : [SPE040](#)
COLLECTION RACK_VIALS 12X75MM_5ML
P/n Test tubes : [AXETN5](#) (4x250u)

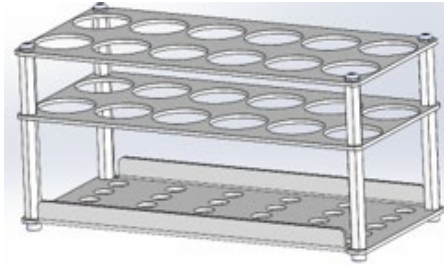


P/n Rack : [SPE050](#)
COLLECTION RACK_VIALS 13X100MM_9ML
P/n Test tubes : [AXETO5](#) (4x250u)
P/n Caps : [B6AWD0](#) (1x1000u)



P/n Rack : [SPE060](#)
COLLECTION RACK_VIALS 16X100MM_11ML
P/n Test tubes : [AXETP5](#) (4x250u)
P/n Caps : [B6AWE0](#) (1x1000u)





P/n Rack : [SPE300](#) - COLLECTION RACK_VIALS
28X140MM_60ML

P/n vials : [CG0481](#) (clear glass) ; [BX1611](#) (amber glass) (1x200u)



- P/n vial caps (Pre-assembled seals) - Other models on request :
- [545940](#) (Closed screw caps White - PTFE seal) (1x100u)
 - [FR3990](#) (Closed screw caps Black - BUTYL red / PTFE gray 1.3 mm) (1x1000u)
 - [CK7510](#) (Open screw caps White / Silicone white - light brown PTFE 3.2 mm) (1x1000u)



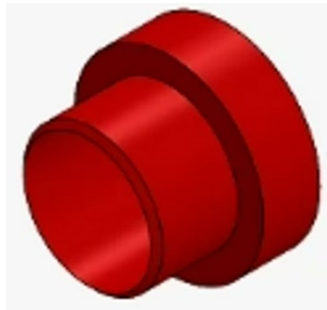
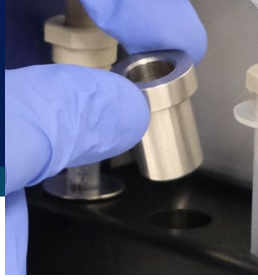
P/n Rack : [SPE070](#) - COLLECTION RACK_VIALS
18X150MM_55ML

P/n Test tubes : [AXETT5](#) (4x125u)

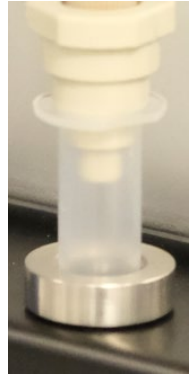
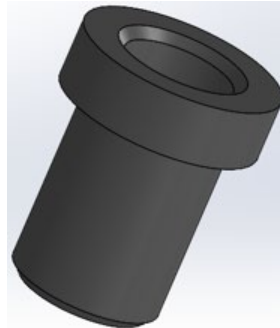


P/n caps polyethylene : [B6AWF0](#) (1x1000u)

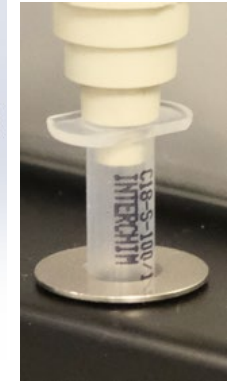
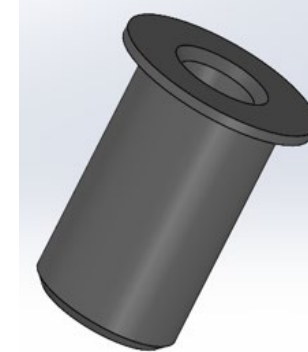




P/n : **SPE510**
INSERT ADAPTER_FPLC COLUMNS 1ML
(1x1u)



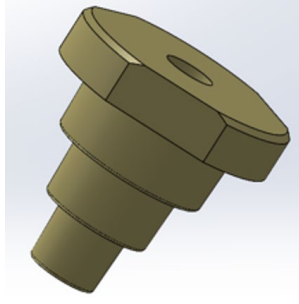
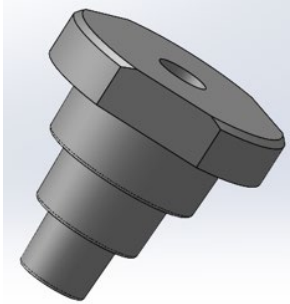
P/n : **SPE110**
INSERT ADAPTER_SPE COLUMNS 3ML
(1x1u)



P/n : **SPE120**
INSERT ADAPTER_SPE COLUMNS 1ML
(1x1u)

No needs insert adapter for 6mL SPE columns





P/n : [SPE520](#) - SPE COLUMNS 1ML-3ML-6ML ADAPTER_PP (1x1u)

P/n : [SPE530](#) - SPE COLUMN 1ML-3ML-6ML ADAPTER_PEEK (1x1u)



P/n : [SPE540](#)

TUBING 23CM KIT FOR ADAPTER & FPLC COLUMN (1x1u)



P/n : [468452](#)

RACCORD MALE UNIVERSEL 1/16" PEEK UPTISUR (1x10u)





P/n clips : [835910](#)



Bottles, round shape

Volume	Dim.	Thread	Cond.	Clear glass		Amber glass
				Screw caps + anti-drop ring	Without cap	Without cap
10 mL	54 x 36 mm	GL25	10 u	B688W0	B688V0	B68AS0
25 mL	70 x 36 mm	GL25	10 u	B688Y0	B688X0	B68AV0
50 mL	88 x 46 mm	GL32	10 u	B4REPO	B688Z0	BAREVO
100 mL	100 x 56 mm	GL45	10 u	B689C0	B689A0	B68B00
150 mL	105 x 62 mm	GL45	10 u	B689E0	B689D0	B68B20
250 mL	138 x 70 mm	GL45	10 u	BV2762	B4REQ0	B68B50
500 mL	176 x 86 mm	GL45	10 u	HP6192	B689G0	B68B80
750 mL	203 x 95 mm	GL45	10 u	B4PQA0	B689I0	B68BA0
1 000 mL	225 x 101 mm	GL45	10 u	HP6165	B689K0	HP6215
2 000 mL	260 x 136 mm	GL45	10 u	HP6205	B689M0	B68BG0
3 500 mL	295 x 160 mm	GL45	1 u	B4PQA1	B689P0	B4PQB0
5 000 mL	330 x 181 mm	GL45	1 u	J16915	B689Q0	B68BK0
10 000 mL	410 x 227 mm	GL45	1 u	JM5535	B689S0	B68BM0
15 000 mL	465 x 258 mm	GL45	1 u	B689V0	B689U0	---
20 000 mL	510 x 300 mm	GL45	1 u	B689X0	B689W0	---
500 mL	153 x 101 mm	GL80	10 u	XF0965	---	---
1 000 mL	223 x 101 mm	GL80	10 u	XF0975	---	---
2 000 mL	510 x 300 mm	GL80	10 u	XF0985	---	---



Bottles, square shape and anti-drop ring

Volume	Hauteur x Ø	Thread	Cond.	P/N
100 mL	109 x 50 mm	GL32	10 u	B68BW0
250 mL	143 x 64 mm	GL45	10 u	HP6152
500 mL	181 x 78 mm	GL45	10 u	B4REW0
1 000 mL	222 x 94 mm	GL45	10 u	B4G2M0

Screw caps and drop rings

Thread	Cond.	Blue	Green	Yellow	Gray	Red
GL25	10 u	B69N90	---	---	---	B69ND0
GL32	10 u	B69NA0	---	---	---	B69NE0
GL45	10 u	B4RF40	B69QR0	B69QQ0	B69QS0	B69NF0



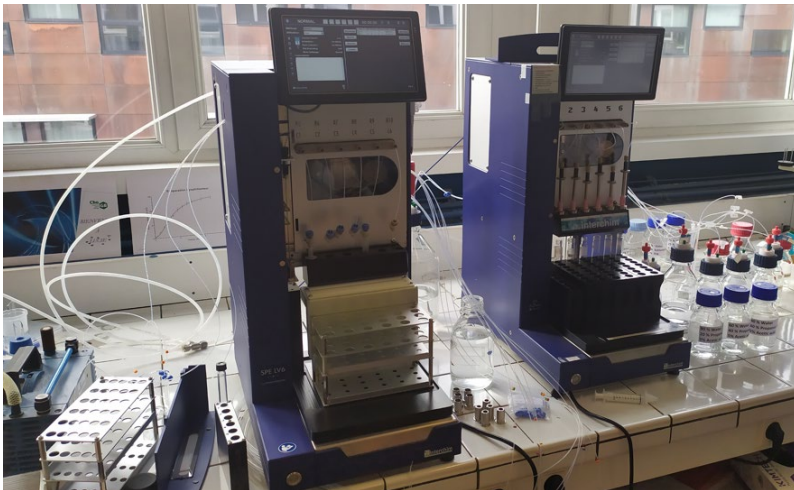
B4REW0



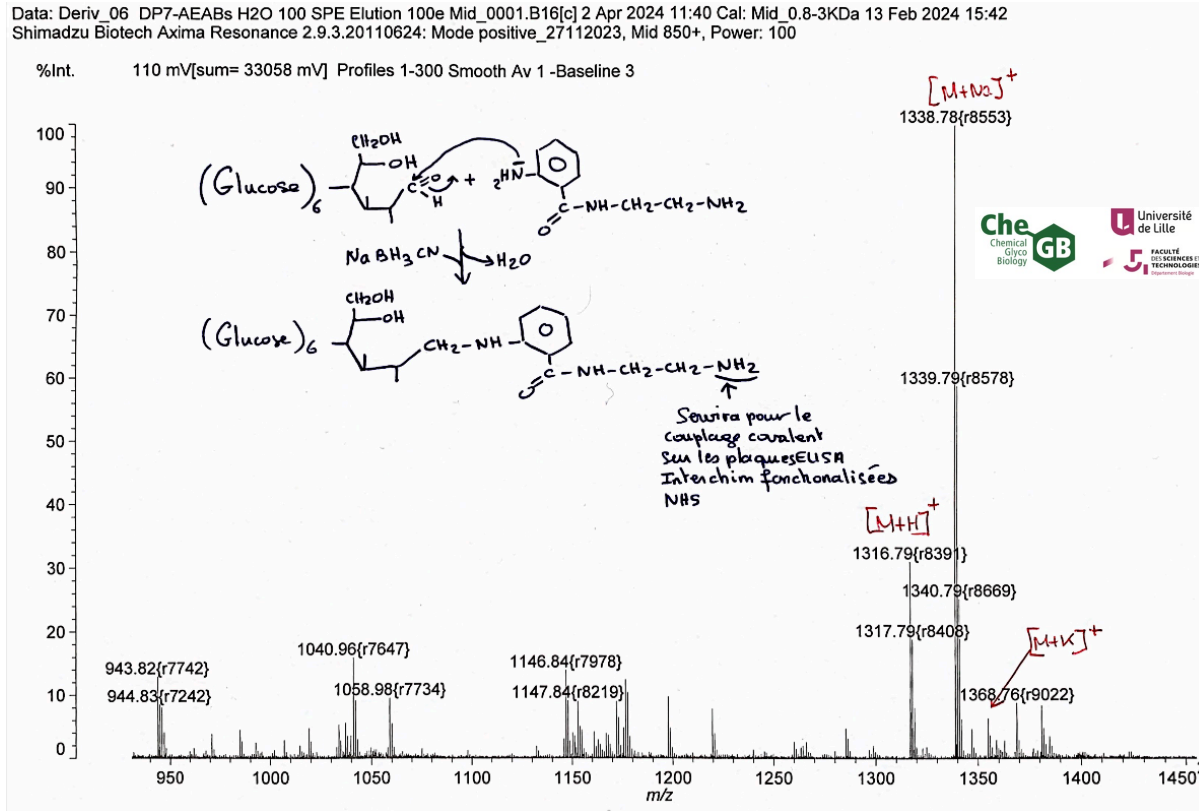
Click to return
Menu



Mr Chirat - Senior Lecturer Biochemistry, HDR CNU
Structural and Functional Glycobiology Department at University Lille



Target : Eliminate AEAB (2-amino-N-(2-aminoethyl)-benzamide) in excess used for derivatized the maltoheptaose



“As you'll see, the spectrum is exactly what we expected. Thanks to the new column connectors, we were able to use 1mL cartridges.”

In conclusion, the new adapters and the operation of the SPE "new" continue to give us full satisfaction. it's an excellent machine.”*

**improvement done on our software*





How to request more information, a quotation or to place an order

Please see from the list below:



By Area

Europe, Israël

info.EU@advion-interchim.com
quotes.EU@advion-interchim.com
orders.EU@advion-interchim.com
Phone: +33 4 70 03 88 55

Asia Pacific

info.APAC@advion-interchim.com
quotes.APAC@advion-interchim.com
orders.APAC@advion-interchim.com
Phone: +46 703108410

North America

info.NAM@advion-interchim.com
quotes.NAM@advion-interchim.com
orders.NAM@advion-interchim.com
Phone: +1 607 266 9162

South America

info.SAmerica@advion-interchim.com
quotes.SAmerica@advion-interchim.com
orders.SAmerica@advion-interchim.com
Phone: +46 703108410

Online

www.advion-interchim.com

**All your orders will be recorded
& processed as quickly as possible.**

**You need technical assistance?
Our scientific experts are here to help.**

Click to return
Menu



Advion Interchim Scientific is the market-facing name of a partnership between Advion, Inc. and Interchim SAS, separate companies that have agreed to market and distribute their products together. All registered and trademark belong to their respective owners. Non-contractual pictures.

